

geoliner 610

3D Wheel Alignment



Easy-To-Use Alignment Solution

geoliner 610

3D Wheel Alignment

FAST, EASY-TO-USE, ACCURATE

Utilising patented imaging technology, the geoliner 610 provides accurate, real-time measurements – reducing set-up and measurement times while generating serious productivity benefits.

Matched with easy-to-use software, the Hofmann geoliner 610 wheel aligner will have your technicians getting readings in a matter of minutes.

The geoliner 610 will enable you to:

- Work at any height, eliminating the need of fixed positions to perform adjustments
- Generate more alignment business



PRODUCTIVITY-ENHANCING FEATURES



Tilt Camera System

- Tilt camera support shown with standard camera beam
- Eliminates the need for fixed-position/level surfaces during alignments
- Positions cameras in range with a touch of a button – even during the alignment process!



Universal Wheel Clamps

- Handle wheel diameters ranging 13" to 24" standard (up to 28" with optional clamp extensions)
- Interchangeable grippers minimise wheel damage



3D Animation

- Provides vehicle-specific adjustment information with easy-to-understand 3D graphics
- Refers to spare parts or special tools as applicable

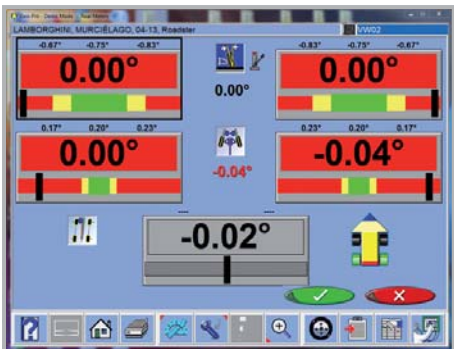


VODI™

- Vehicle Orientation Directional Indicator, located on camera beam
- Guides technician through measuring process
- Reduces the amount of time spent walking back and forth from the vehicle to the aligner console

SPEED + ACCURACY = PROFITABILITY!

Less Time to Obtain Readings + Reduced Correction Times = Faster, More Accurate Alignments!



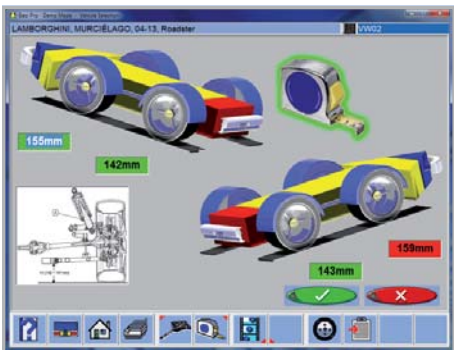
- **All Readings Screen**
- All measured values are presented on a large graphic 3D display to allow simple diagnostics of all alignment data.

Make Alignment Your Most Profitable Service

The geoliner 610 leverages one of the most advanced imaging alignment systems available. The system creates a live, 3D model of the vehicle and tracks corrections as they happen. The geoliner 610 reduces set-up and adjustment times because it is:

- **Ergonomic:** Measures at multiple lift heights.
- **Adaptable:** Works on non-level surfaces.
- **Easy-to-use:** Captures targets automatically.
- **Fast:** Shows progress in real-time.

By using the geoliner 610, alignment will quickly become your most profitable service.



- **Ride Height Measurement**
- Review vehicle specs and request input from the technician for those vehicles requiring ride height measurement.

geoliner 610

3D Wheel Alignment

FEATURES

- A-Arm Adjustments
- Advanced Customer Database with Backup/Restore
- Adjust Camber Only
- Adjustment Help Files
- Advanced Alignment Measurements with Reading/Specifications and Cross Values
- Aligner System Diagnostics
- Backup/Restore of Calibration and Setup Data
- Calibration History
- Caster and SAI Turntables
- Custom Vehicle Specifications
- Elevated Adjustments
- EZ-Toe
- EZ-Track Database
- 4-Wheel Steer Adjust
- FrameCheck™ Light Truck Frame Angle
- Front & Rear Camber (-15° to +15°)
- Front and Rear Toe
- Front Caster (-28° to +28°)
- Front/Rear/All/Zoom Readings
- Included Angle
- Individual Camber
- Individual Caster
- Individual Toe
- Initial/Final Color Print
- Integrated Help System (PDF)
- Light Truck Bushing
- Live Caster, Camber and Toe – Elevated
- Live Caster, Camber and Toe – Turntables
- Meter Screens
- Multiple Clamp Support
- Multiple Print Formats
- Multiple Units of Measure
- NorthStar Shim Program
- Rear Shim Programs
- Regional Specifications
- Remote Control (Optional)
- Ride Height
- SAI & Thrust Angle
- SAI Elevated
- 3D Animation
- Thrust Align Only
- Toe-Out-On-Turns
- Tools, Parts, and Adjustment Instructions
- 28 Languages
- 2-Wheel Alignment
- Tilt Camera System
- Vehicle Specs: 25+ Years
- Video Help



SPECIFICATIONS

Equipment Specifications

- Wheel Size: 13" – 24"
- Tire Diameter: Unlimited
- Track Width: 122 x 244 cm
- Wheel Base: 200 x 457 cm
- Power Requirements: 230 V, 1Ph, 50/60 Hz

Standard Accessories

- Universal Wheel Clamps/Targets
- Steering Wheel Holder
- Brake Pedal Depressor
- Camera Beam
- Color Ink Jet Printer

Recommended Accessories

- Premium Turntables
- Paddle Kit
- Rollback Kit
- Roll Forward / Rollback Kit

Optional Accessories

- Universal Wheel Clamp Ext. Kit
- Alloy Quick Clamp Kit



EMEA-JA

Snap-on Equipment s.r.l. · Via Prov. Carpi, 33 · 42015 Correggio (RE)
Phone: +39 0522 733-411 · Fax: +39 0522 733-479 · www.snapon-equipment.eu

France

Snap-on Equipment France · ZA du Vert Galant · 15, rue de la Guivernone BP 97175
Saint-Ouen-l'Aumône · 95056 Cergy-Pontoise CEDEX
Phone: +33 134 48 58-78 · Fax: +33 134 48 58-70 · www.snapon-equipment.fr

Germany

Snap-on Equipment GmbH · Konrad-Zuse-Straße 1 · 84579 Unterneukirchen
Phone: +49 8634 622-0 · Fax: +49 8634 5501 · www.snapon-equipment.de

Italy

Snap-on Equipment s.r.l. · Via Prov. Carpi, 33 · 42015 Correggio (RE)
Phone: +39 0522 733-411 · Fax: +39 0522 733-410
www.snapon-equipment.eu

United Kingdom

Snap-on Equipment Ltd. · 48 Sutton Park Avenue · Reading RG6 1AZ
Phone: +44 118 929-6811 · Fax: +44 118 966-4369
www.snapon-equipment.co.uk

