

# *geoliner® Gen4*

## *3D Wheel aligners*

**NEW**



*A generation ahead*

# geoliner® Gen4

## 3D Wheel aligners

### A generation ahead

To continue to maintain their leadership in imaging aligners, Hofmann present their new generation of 3D aligners, the geoliner Gen4 series.

The new ultra high resolution cameras, the handy ultra high resolution targets and the power of the Pro42 software provide the technician with an incomparable tool to speed the alignment process. Alignment readings in less than 2 minutes on a wide array of wheel sizes and configurations make the aligner profitable for the professional workshop. Quick access to readings allows you to do more alignments.

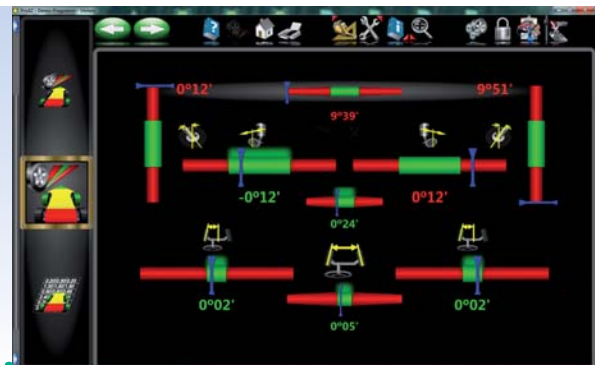
A comprehensive database always up to date allows you to measure most of the vehicles on the road.

Intuitive and productivity-enhancing features like

- Automated caster sweep
  - 3D animations
  - EZ-Link
  - Drive-on camera (optional)
  - Rolling radius
  - A-arm adjust
  - EZ toe
- make your shop more efficient.

### The Pro42 software

Pro42 is a high-resolution ICON based software program designed to provide the most effective use of information required by the technician. It has all the required functions in a one-touch program format to allow the technician to provide accurate and speedy alignments. The software provides unique diagnostic information to allow the technician to easily understand the vehicle problems.

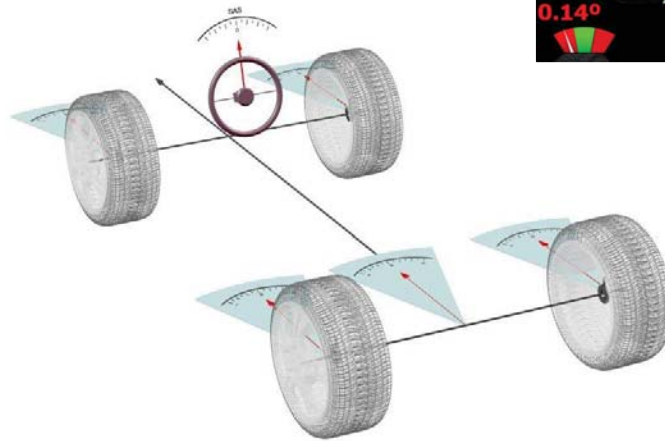


### Ultra high resolution targets

Double targets offer the advantage of lighter weight (up to 1.8 kg). These innovative targets intrude less in the work area used by the technician.

## EZ-Link™ steering angle sensor (SAS) reset

EZ-Link™ software alerts the technician of OEM service and maintenance procedures related to electronic stability control and electric power steering systems.



## Optional drive-on camera

The drive-on camera aid eliminates the need for assistance with positioning the vehicle on the lift.



# geoliner® Gen4

## 3D Wheel aligners

### 3D – the third dimension of wheel alignment

Offering faster alignment combined with increased accuracy and stability – Hofmann 3D wheel aligners stand for reliable wheel alignment and premium design quality.

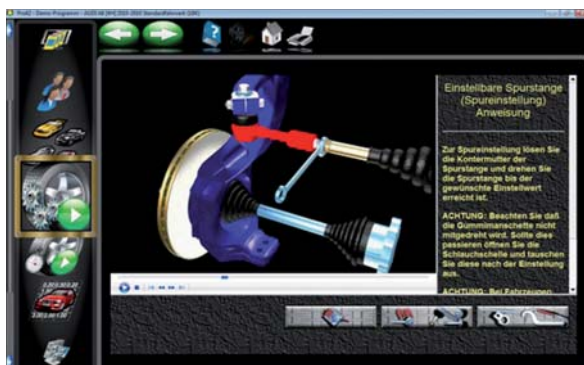
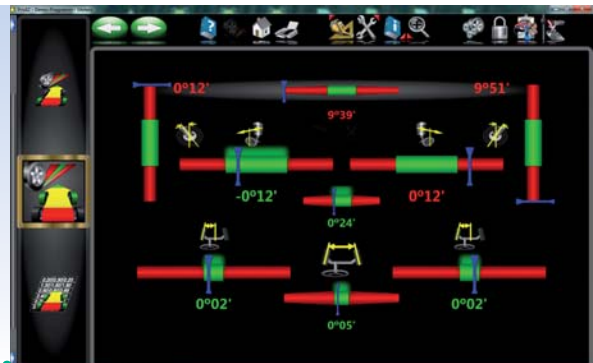
Not only does it add to the professional appearance of your workshop, but it also improves productivity and performance levels.

- Hofmann's legendary 3D imaging technology measures the vehicles' alignment in 3 dimensional space thereby delivering absolute and more accurate data than conventional alignment systems. Measuring the vehicles' alignment in 3D also removes the dependence on the lift as an alignment reference plane.

- Hofmann 3D aligners do not require conventional run-out compensation; therefore no jacking of the vehicle is required. Instead a simple time-saving operation called vehicle positioning is performed where the vehicle is rolled a short distance backward and forward. This is ideally suited for vehicles where jacking is not recommended prior to wheel alignment.
- Hofmann 3D aligners are available in stationary camera post or mobile camera lift versions to suit individual workshop requirements.
- Our extensive service network and dedicated training centre guarantee a professional technical back up from initial product training right through to after sales service and support.

### 3D all readings screen

All measured values are presented on a large graphic 3D display to allow simple diagnostics of all alignment data.



### 3D animation graphics

An easy-to-understand user program provides the operator with vehicle-specific adjustment information, referring to spare parts and the use of special tools where applicable.



## geoliner 670 Gen4

### its most distinctive features

- Hofmann vehicle specs are sourced directly from the OEM and consequently are complete, up to date and correct.
- Intelligent self-test – the software reports any hardware defects.
- Printed outputs can be customised to suit customer requirements.
- Measurement procedures can be easily customised, adjusting workflow to user preferences.
- User management avoids unauthorised access.
- Continuous measurement of camber, caster and toe, and live on-screen displays eliminate the necessity for time-consuming re-measurement procedures.
- EZ TOE – to facilitate individual toe adjustment without the necessity of locking the steering wheel.
- Live readings of vehicle dimensions for improved collision repair.
- Caster trail and scrub radius can be measured – an absolute must for collision repair, or vehicle tuning.
- Maintenance is reduced as the sensitive measurement units are at a safe distance from the vehicle. Consequently regular calibration is drastically reduced.

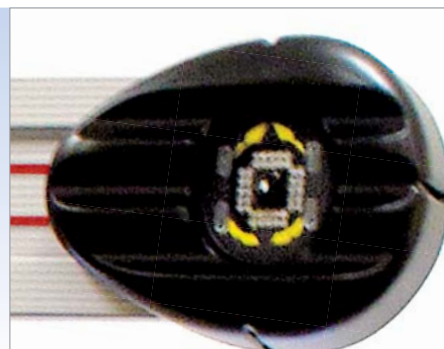


### User guidance

Self-explanatory menu guidance and the use of unmistakable symbols and colours reduce input errors.

### VODI™

- Vehicle Orientation Directional Indicator, located on camera beam
- Guides technician through measuring process
- Reduce the amount of time spent walking back and forth from the vehicle to the control terminal of the aligner



# geoliner® Gen4

## 3D Wheel aligners

### geoliner 680 Gen4

The following features make the geoliner 680 Gen4 even more versatile.

- The aligners can be integrated into workshop networks and vehicle specs can be up-dated via USB key.
- Simple and quick ride height measurement with the optional accurate TIP. Automatic data input saves time and additional cost.
- Customer data can be imported and exported and are hence available for use elsewhere in your garage.
- Caster, camber and toe can be adjusted even with the wheels demounted – important for vehicles where adjusting elements are difficult to access.
- The 22" wide-screen monitor and the control terminal improve ease of operation and customer awareness.
- Advanced vehicle dimensions
- Rolling Radius™ tyre diameter



#### Wheel Clamps

- The quick clamp feature makes them both versatile and easy to use, chromium plating reduces corrosion.
- They have a diameter range of 11" to 22" (up to 26" with optional extensions). Clever design also allows measurement of maximum steering angle on vehicles with high SAI and caster values.



#### TIP – target imaging pointer (optional)

- Simple and quick ride height measurement is possible with the accurate TIP. Automatic data input saves time and additional cost.



#### Interchangeable grippers









- With interchangeable grippers the wheel clamps can be used for alloy and steel rims alike. Plastic wheel trims can also be left in place during alignment.



#### Ride height measurement

- Whenever the TIP cannot be used, the system can be switched over to conventional ride height measurement.

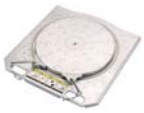



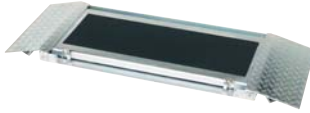



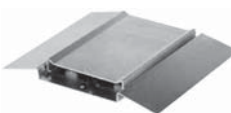

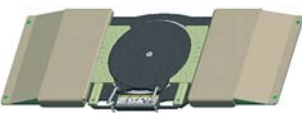

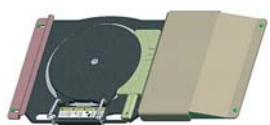

STANDARD EQUIPMENT	geoliner 670	geoliner 680
2 short posts (pit version)	optional	optional
2 tall posts (work level approx. 1,2 m)	optional	optional
Camera beam lift (work level 0 – 2,0 m)	optional	optional
Camera beams LH/RH with camera system	•	•
Wide-screen monitor	19"	22"
A4 colour printer	•	•
Loudspeaker	•	•
IR remote control unit	•	•
Steering wheel holder	•	•
Brake pedal lock	•	•
Mobile control terminal	•	•
Wheel clamps 11" – 22" including double targets for use on rear and front end	•	•

Working height		Volt	Measures and weight incl. packing
	variable 0 – 2 m	230 V, 1 ph, 50 – 60 Hz	 (1150 x 980 x 1700) 190 kg  (3000 x 340 x 450) 50 kg
	ca. 1,20 m		 2 x (1450 x 300 x 200) 74 kg  (3000 x 340 x 450) 150 kg
	0 m		 2 x (1450 x 300 x 200) 74 kg

# geoliner® Gen4

## 3D Wheel aligners

### OPTIONAL EXTRAS

	33260	Premium turntable kit		29215	Hub assembly kit
	4029542	Paddle kit for premium turntables		4031154	Tilt camera beam
	4027193	1 metre rear slip plates		4029276	Tyre clamp kit
	4027190	Portable rear turn/slip plates		4028515	TIP (target imaging pointer)
	4027192	Portable rear slip plates		8-07524A	Dust cover for wheel aligner terminal
	4029543	Roll forward/roll back kit		4029778	Wheel chock kit
	4029544	Roll back kit		4027194	Toe pressure bar

**Snap-on** EQUIPMENT

#### EMEA-JA

Snap-on Equipment s.r.l. · Via Prov. Carpi, 33 · 42015 Correggio (RE)  
Phone: +39 0522 733-411 · Fax: +39 0522 733-479 · [www.snapon-equipment.eu](http://www.snapon-equipment.eu)

#### France

Snap-on Equipment France · ZA du Vert Galant · 15, rue de la Guivernone BP 97175  
Saint-Ouen-l'Aumône · 95056 Cergy-Pontoise CEDEX  
Phone: +33 134 48 58-78 · Fax: +33 134 48 58-70 · [www.snapon-equipment.fr](http://www.snapon-equipment.fr)

#### Germany

Snap-on Equipment GmbH · Konrad-Zuse-Straße 1 · 84579 Unterneukirchen  
Phone: +49 8634 622-0 · Fax: +49 8634 5501 · [www.snapon-equipment.de](http://www.snapon-equipment.de)

#### Italy

Snap-on Equipment s.r.l. · Via Prov. Carpi, 33 · 42015 Correggio (RE)  
Phone: +39 0522 733-411 · Fax: +39 0522 733-410 · [www.snapon-equipment.eu](http://www.snapon-equipment.eu)

#### United Kingdom

Snap-on Equipment Ltd. · 48 Sutton Park Avenue · Reading RG6 1AZ  
Phone: +44 118 929-6811 · Fax: +44 118 966-4369 · [www.snapon-equipment.co.uk](http://www.snapon-equipment.co.uk)