



For Automotive Professionals

# MULTI PEGASO

For cars and commercial vehicles

**TEXA**

TEXA products guarantee excellent diagnostic coverage for vehicle makes and models.  
In order to view what TEXA has to offer,  
simply visit [www.texa.com/applicationlist](http://www.texa.com/applicationlist).

The **MULTI PEGASO** is the most advanced multibrand diagnostic and emission analysis tool.

Its core features are precision, efficiency and practicality: the MULTI PEGASO is the multipurpose station that will guarantee the success of your workshop!



# MULTIPURPOSE STATION

## FOR WORKSHOPS THAT MOVE WITH THE TIMES

Repairing the latest-generation of vehicles requires specific skills and technical expertise. It also demands the use of the right sort of equipment built around innovative technological solutions that can be continuously updated to cope with the rapid changes and constant progress typical of the automotive sector. For example, independent workshops with a multibrand clientele are required to carry out work on an extensive range of vehicles, performing all the relative tests to ensure that repairs are performed properly and completely.

Workshops looking to satisfy their customers and repair any type of vehicle must therefore make sure they are equipped with a series of innovative diagnostics tools. These must not only be professional and accurately tested, but also reliable and have a long service life.

Every day this equipment comes into contact with oil, solvents, dust and tiny particles of various substances and materials, and is constantly exposed to humidity.

For this reason TEXA has developed the new MULTI PEGASO multipurpose station. A versatile and robust solution, ideal for use in the workshop, this system will revolutionise the way work is managed.

The **MULTI PEGASO** is the most complete and reliable solution on today's market.

It combines emission analysis with advanced diagnostic resources in a single workstation. It manages all TEXA interfaces and modules simultaneously, rationalising the work processes. Even more importantly, it uses Bluetooth wireless technology to communicate with the diagnostics tools and exhaust gas analysers, thus freeing the workshop of cables.

The GASBOX Autopower and OPABOX Autopower modules can be stored in the bottom of the trolley, and there are two specific brackets for attaching the diagnostics tools to the sides of the top shelf.

All the tools needed for the day's work can thus be kept tidily and to hand on a single trolley, rationalising the space in the workshop.



# MULTI PEGASO

## TESTED FOR USE IN THE HARSHTEST ENVIRONMENTS



The MULTI PEGASO is mounted on a robust trolley with 4 sturdy wheels and is based on a new industrial PC fully engineered by TEXA. The advanced software program has been specifically developed to manage complex analysis and diagnostic procedures.

Most of the damage caused to computers installed on trolleys can be attributed to the vibrations and stress typically caused by transporting and moving the trolley around inside the workshop.

The MULTI PEGASO features a robust and compact version of the traditional hard disk and a special shock absorbing structure.

The use of energy-saving electronics and innovative heat sinks eliminates the need for cooling fans in the CPU.

This solution prevents the formation and build-up of dust and other impurities caused by the circulation of

air inside the device.

The MULTI PEGASO is therefore immune to the critical problems typical of the workshop environment.

The 17" LCD monitor is shock-proof and designed specifically for use in the workshop. The hinged supporting bracket allows the monitor to be folded down onto the trolley after use, to protect it from dust.

Other features of the MULTI PEGASO include a professional keyboard, optical mouse and high-quality ink jet colour printer suitable for workshop applications. An infrared remote control device to control the main functions is supplied as standard.

Serial and USB ports are available for connection to external TEXA peripherals.

The ergonomic housing for the GASBOX Autopower

and OPABOX Autopower modules is fitted with quick couplings, to reduce overall dimensions and ensure efficient and safe recharging.

# MODULAR OPERATION



## DIAGNOSTICS

(Bluetooth connection)



### NAVIGATOR RANGE

(Bluetooth connection)



### TRIBOX Mobile

(Bluetooth connection)



### UNIProbe

(Bluetooth connection)

## EMISSIONS

(Bluetooth connection)



### GASBOX Autopower\*

(Bluetooth connection)



### OPABOX Autopower\*

(Bluetooth connection)



### RC3\*

(Bluetooth connection)



### RC2\*

(Bluetooth connection)

# EMISSION ANALYSIS

Under a series of emission testing laws, workshops, service centres and roadworthiness testing facilities are called upon to offer increasingly specific and professional services.

Specifically, they must certify their work and deal with the various authorisations issued by the Ministry of Transport. All this requires the use of latest-generation tools, which must be tested and specifically approved, so as to be able to issue certificates of conformity immediately and practically. Emission analysis no longer consists of a straightforward measurement.

Nowadays there are specific procedures to be followed. The large colour screen is extremely practical and essential for displaying each step of the emission analysis process clearly. With these characteristics, the MULTI PEGASO will replace previous display analysers

as the new tool of reference.

The MULTI PEGASO is built to house the gas analysers for petrol engines (GASBOX Autopower) and diesel engines (OPABOX Autopower).

It can be used to analyse emissions and verify compliance with legal requirements as well as to perform diagnostic operations (engine inefficiency, high fuel consumption, diagnostics light, cold starter, catalyser, etc.).

Emission analysis would not be complete without measuring the RPM and temperature of the engine being tested. For this purpose, TEXA has developed the new RC2 and RC3 modules, compatible with all vehicles with petrol or diesel engines.

*Bluetooth* wireless technology is used to send the data directly to the MULTI PEGASO, without requiring connection cables.





**RC2\***  
(Bluetooth connection)



**RC3\***  
(Bluetooth connection)



**GASBOX Autopower\***  
(Bluetooth connection)



**OPABOX Autopower\***  
(Bluetooth connection)



## RC2 & RC3 MODULES



The RC2 and RC3 modules are used to measure engine RPM and temperature on all types of vehicles.

RC2 can measure engine RPM in two different modes:

- **using microphone and residual battery signal.**
- **using an inductive clamp and piezoelectric sensors.**

RC3, on the other hand, features three different measurement modes:

- **using microphone and residual battery capacity signal.**
- **using an inductive clamp and piezoelectric sensors.**
- **via the EOBD socket** for all vehicles conforming to Euro3 (usually vehicles made after 2000);

When using the latter mode to measure engine RPM and temperature, the tool can perform the tests **without needing to open the bonnet.**

RC3 can also be used in scan-tool mode; connected to the EOBD socket, it can read the parameters defined by this standard in accordance with new emission control procedures.

Both the emission analysis modules and the RC2 and RC3 modules are separate units from the MULTI PEGASO and can communicate with the latter without requiring connection cables. Nonetheless, when the test is complete they can be attached to the trolley with a quick and simple operation for maximum space-saving.

# ANALYSIS MODULES



The GASBOX Autopower and OPABOX Autopower modules are designed to be practical and versatile, in order to meet the full range of requirements of operators in the sector.

The gas analyser chambers are now incorporated into handy trolleys with ball-bearing mounted wheels.

They can easily be moved around in the workshop and placed near the vehicle being tested, simply by pulling out the practical telescopic handle.

There is also a special retractable handle which can be used to lift the module out of the trolley.

When the telescopic handle has been pushed back in, the two modules can be placed on each side of the MULTI PEGASO, using the quick couplings.

Once the GASBOX Autopower and OPABOX Autopower are housed in the trolley, quick battery charging starts

immediately. The modules are designed to operate continuously throughout the day without having to recharge the batteries.

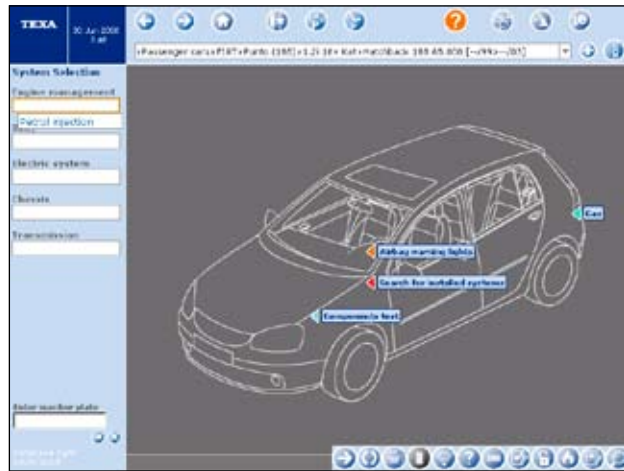
The GASBOX Autopower and OPABOX Autopower are in fact equipped with a high capacity battery, capable of supplying power for more than 10 hours of operation.

A new gas analysis probe has also been designed to guarantee minimum dimensions and maximum versatility.

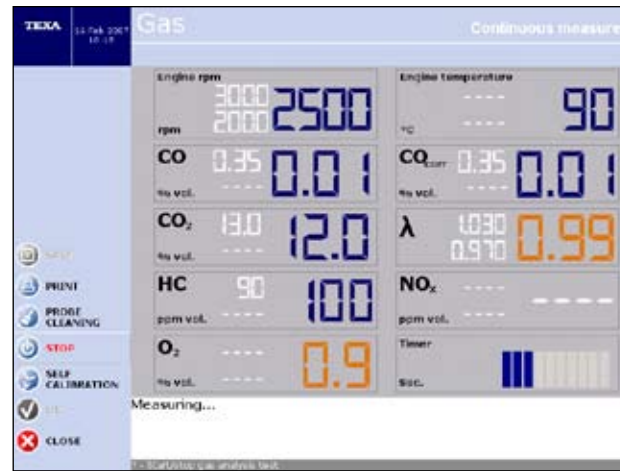
Thanks to a special articulated joint, it can be adapted to fit all exhaust pipes and all vehicle models.

# EMISSION ANALYSIS SOFTWARE

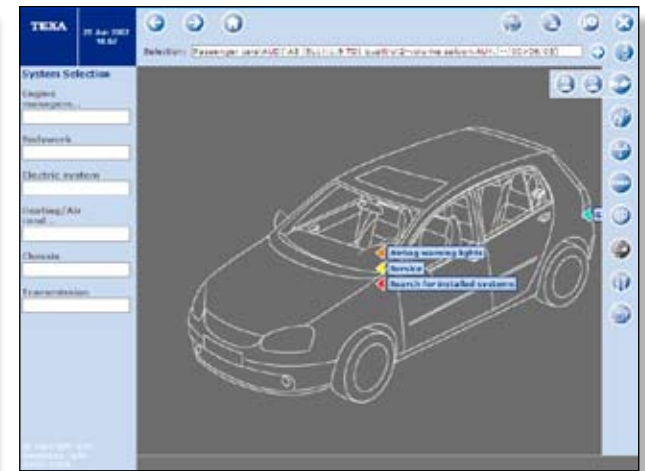
## INSTANTLY AVAILABLE INFORMATION AND TOOLS



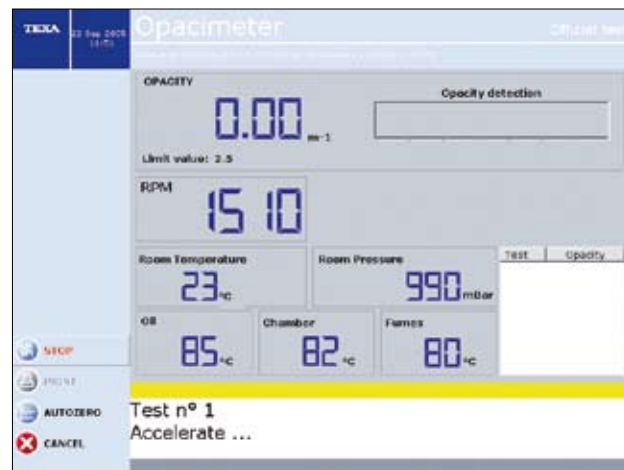
After having selected the type of car, model and engine...



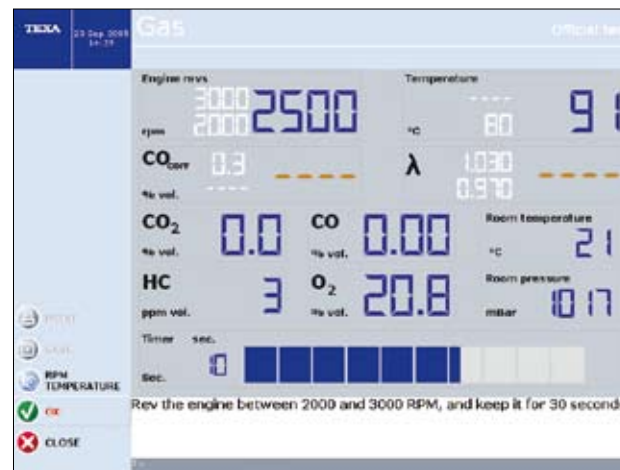
...the "GAS" icon can be selected, located near the exhaust, starting the continuous measurement procedure with reference to the values automatically retrieved from the database.



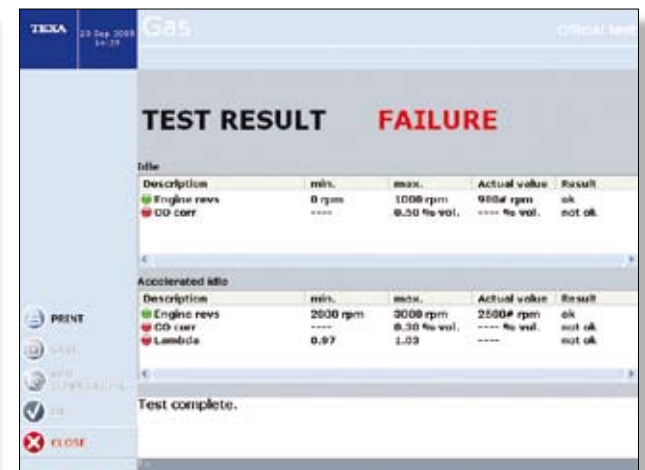
Selecting emission analysis from the side bar, on the other hand, starts the official test procedure.



The measurements page for official testing of diesel engines contains a guided sequence for fast, accurate performance of the measurements required by law.



The measurements page for official testing of petrol engines also displays the same type of guided sequence for servicing and emission certification tests.



At the end of the test a summary page displays the official test results.





For all emission tests, engine RPM and temperature also need to be measured. The RC3 displays the data simply and quickly, using the connection to the EOBD socket, without having to open the bonnet.



Alternatively, the measurement may be made using a battery lead, directly in the engine compartment.



The program displays the real-time engine RPM and temperature readings, acquired using the selected mode.



For diesel engines, values can also be measured using the piezoelectric sensor on a metal injector pipe.



For temperature measurements, simply bring the probe into contact with the engine oil, inserting it in place of the dipstick.



For both petrol and diesel engines the engine RPM and temperature values are automatically incorporated in the analysis procedure.

# DIAGNOSTICS

With the MULTI PEGASO, the keyword is modularity. It is designed to enable those who already own a diagnostics tool to supplement their equipment with other tools, without having to change the ones they already use.

Data is processed and displayed in a standard format, using the IDC3 operating environment to manage all the information coming from the TRIBOX Mobile, the NAVIGATOR TX range of interfaces, and the UNIProbe.

The MULTI PEGASO communicates with the diagnostic interfaces via *Bluetooth* wireless technology. This cuts operating times and simplifies the procedures involved, with huge benefits in terms of workshop efficiency and productivity.



**UNIProbe**  
(Bluetooth connection)



**TRIBOX Mobile**  
(Bluetooth connection)



**NAVIGATOR RANGE**  
(Bluetooth connection)



# BLUETOOTH MODULES AVAILABLE

## NAVIGATOR TX RANGE



The NAVIGATOR TXT, TXC & TXB are TEXA's range of Automotive diagnostic interfaces.

**NAVIGATOR TXT:**

For all types of vehicle (CAR, BIKE and TRUCK).

**NAVIGATOR TXC:**

For all cars and light commercial vehicles fitted with EOBD socket.

**NAVIGATOR TXB:**

Specifically for the BIKE sector, used to perform diagnostics on motorbikes, scooters, jet skis and quads.

# TRIBOX Mobile



## TRIBOX Mobile

The diagnostics interface fitted with interchangeable modules for working on all types of vehicles.

Can also be used for remote testing with the vehicle in movement, thanks to the GPRS module.

It features a wireless connection to all the TEXA display interfaces or any PC using *Bluetooth* technology.



# UNIProbe



**UNIProbe** is the most complete system for acquiring analogue and digital measurements. One solution that includes four different tools, developed expressly for the automotive industry:

- **Oscilloscope** with four independent analogue input channels;
- **Multimeter** for voltage, resistance and current measurements;
- **TNET** for physical network analysis;
- **Battery Probe** for analysing the battery, starting and charging system.

# IMAGINE FACING A NEW DIAGNOSTIC PROBLEM WITH THE “SEARCH” BUTTON, YOU NOW MAY HAVE THE SOLUTION IMMEDIATELY AT HAND



Workshops today face an increasing number of problems relating to electronic systems and components. When faced with a new diagnostic problem, even though a garage has a good quality diagnostic product and technical training relating to it, sometimes it is good to talk to a technical advisor or colleague who is able to assist you.

Based on experience and market research, TEXA have found that many faults in vehicles are often similar, and vehicles often have the same technical problems. It is therefore possible to solve a specific problem using information regarding a previously successful repair.

The workshop should ideally know and have access to a database divided by problems and related to solutions.

## **Set of solutions.**

TEXA has created a specific database of information collected by call centres through its branches (Spain, France, Germany, Great Britain, USA, Poland and Russia). The system collects in a single database, the most frequent solutions to technical problems.

The system can collect approximately 100 new solutions every week from around the world. These solutions are subsequently checked, entered in a special format and translated into all the languages. There are thousands of solutions already prepared and this number is increasing every day.

## **How can I find the solution I'm looking for?**

Answers to common questions, solutions to previously resolved problems, fault codes, warning and help

received from workshops across Europe, is important information that TEXA wants to share with its customers: by using the MULTI PEGASO!

## **The solution!**

TEXA has wasted no time and developed the best option available in the market. TEXA has signed an agreement with the leading company in this field: Google.

By using Google technology, TEXA is able to organise information and make it available in a very simple and quick way. The MULTI PEGASO allows access to this feature by simply selecting the the “SEARCH” icon. With the MULTI PEGASO, the customer can search for information or a solution, to a problem found with a vehicle during maintenance in the workshop, using the “SEARCH” function, and by writing the fault type to be

SEE DEMONSTRATION ON [WWW.TEXA.COM/DEMO](http://WWW.TEXA.COM/DEMO)



solved in free text (using their own terminology).

Alternatively, it can be selected from a list divided by vehicle make and model, and the description made by TEXA of problems previously solved.

The “SEARCH” system will automatically offer a series of solutions, already processed by TEXA and validated by a workshop, so the technician can choose a solution relevant to their problem.

Selecting a certain system, in this example the fuel injection system, the software filters the data, showing only the results corresponding to that specific system for the specific model of vehicle selected.

By simply entering the model of vehicle, all compatible results are shown, regardless of the specific system.

The “Did you mean” function helps any spelling errors, providing the most reliable results relating to the text entered by the technician.

Selecting the desired search result opens a straightforward screen describing the type of problem found, the causes of the problem and the certified repair procedure.

# TEXA INTRODUCES AUTOMATIC SCANNING OF SECOND GENERATION SYSTEMS

## WITH TEXA GLOBAL SCAN 2 YOU CAN IMMEDIATELY GET TO THE POINT!



The **TGS2** system, TEXA Global Scan 2, is an addition to the main operating system IDC3, and represents the second generation in the automatic scanning of vehicle ECUs.

This innovation developed by TEXA offers the technician in depth analysis, on a wide range of brands and models, which has always been TEXA's strength. Compared to the first generation, TGS2 has been designed specifically for the needs of the multi-brand environment.

The advantages are obvious, as the technician receives immediate feedback on the systems that the TEXA tool can diagnose, and to which it can automatically connect directly. When a car comes into the workshop, the technician connects the TEXA interface to the diagnostics socket; in a fully automatic way, without any

other manual intervention, the IDC3 software scans all the known systems.

If after this procedure some system errors are identified, you can immediately enter in the diagnosis of the ECU to which they relate.

If the systems are fault free, you can use this facility to access the ECUs to perform further test or adjustments. There is no doubt that this new scanning generation is another important step by TEXA as a way of simplifying the diagnosis procedure as the technician's work becomes more complex.

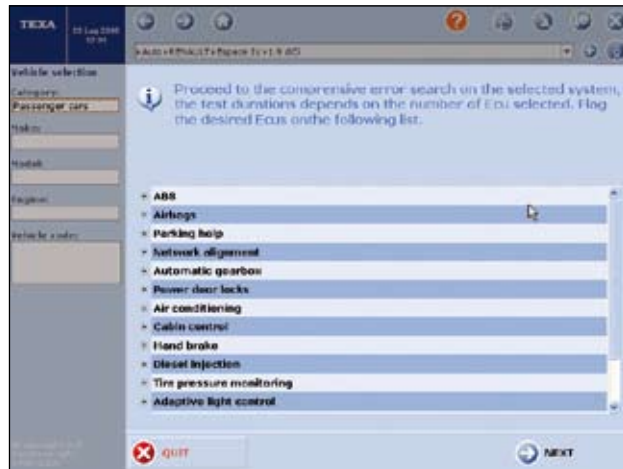
It is no longer necessary to look manually for faults: TGS2 can do it automatically, saving and improving accuracy.

The combination of TGS2 and Google "SEARCH"

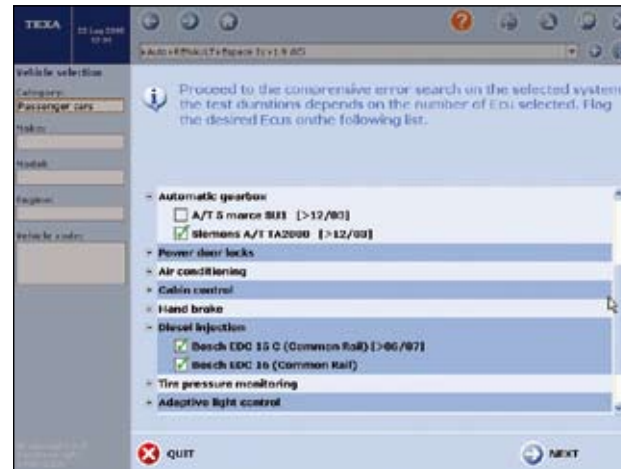
represents the best assistance that modern technology can offer when repairing modern vehicles.

Saving time and uncertainty, offering their customers a professional service, is a fundamental requirement of the modern technician; to satisfy this need, a new reference point, TEXA Global Scan 2, has been developed.

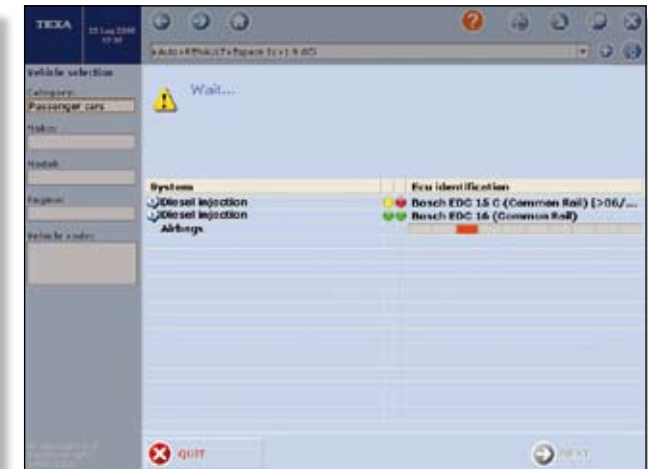
# TGS2 IS SIMPLE AND EFFICIENT, IT SAVES TIME AND ENSURE CORRECT SYSTEM IDENTIFICATION



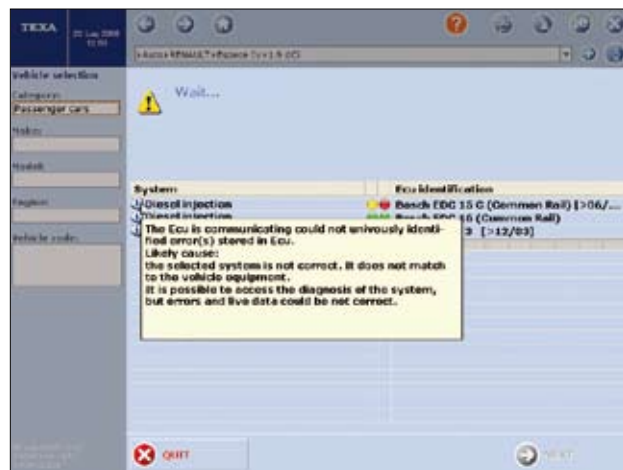
After selected the vehicle to be tested, a list of the available electronic systems is displayed.



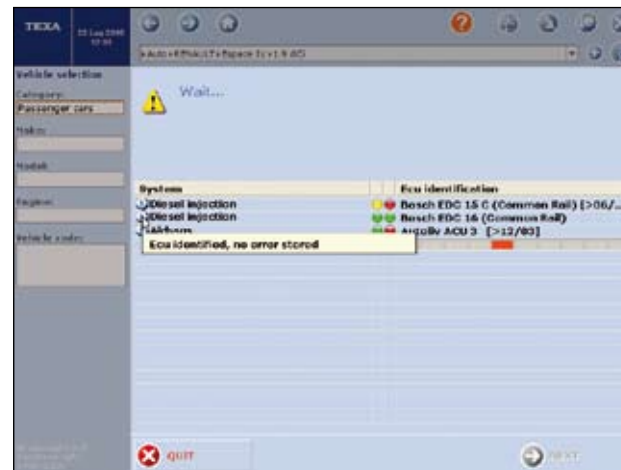
There is now an option to select more than one system at the same time from the menu.



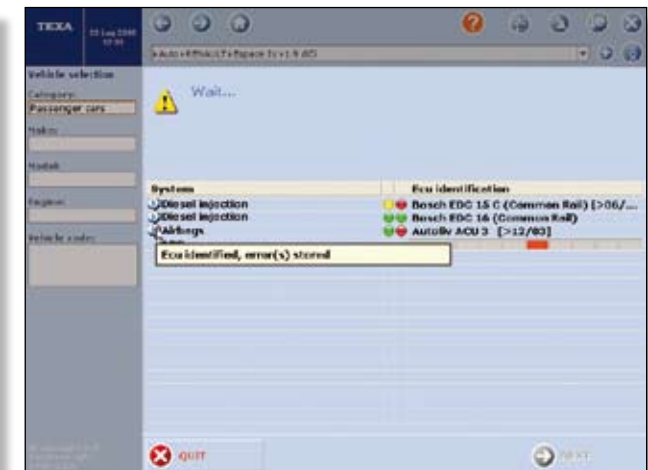
The software starts identifying the systems and ECU's available.



For every system identified a report is displayed. If a variant of a system is found, but full communication is not possible the user is notified, by a yellow icon in the first column.



In this case the ECU has been positively identified and allows full communication and there are no errors present. 2 green icons are displayed.



In this case the ECU has been positively identified and there are errors present. 1 green and 1 red icon are displayed.

# THE IDC<sub>3</sub> OPERATING ENVIRONMENT

MULTI PEGASO incorporates the IDC<sub>3</sub> Plus operating environment as standard.

This software integrates the tools and information to perfection, giving the operator a series of technical data and information essential for working on the full range of on-board systems.

IDC<sub>3</sub> automatically manages the connection to all TEXA tools. It is therefore possible to switch from auto diagnostics, to gas analysis and the oscilloscope, during the same test on the same vehicle, without ever interrupting the work session.

It offers a number of innovative functions:

**Technical bulletins** describing how to solve specific problems. If the problem has already been solved, the entire procedure will be available;

**General vehicle diagnostics** (to access all diagnostic functions and technical information).

**Mechanical and technical data** (mechanical adjustments, tightening torques and wheel alignment data).

**Advanced electronic information** (wiring diagrams, ABS and component datasheets, safety, comfort, transmission, entertainment, lighting and bodywork systems, system and device datasheets);

**Routine maintenance data** (according to manufacturer specifications).

**Additional electrical information** (lighting, dashboard, doors, windows, sunroof, seats, rear-view mirrors, standard Hi-fi equipment, alarm systems).

**Timing belts** (technical data for correct replacement).

**Air-conditioning data** (operative A/C system

recharging procedures).

**Spare part orders management** (special pre-defined procedures to facilitate orders).

**Customer management** (storing of repairs, work, servicing, tests, emission certificates).

The use of innovative storage and database management solutions means that the historical data for a given vehicle can always be displayed, for example by entering its registration number.













The system displays all the repairs carried out on the vehicle, thanks to the storage of all information in the Customer Management module.

Subscribers receive periodical technical bulletins with information about common problems regarding specific models: if the problem has been solved the entire procedure will be immediately available.





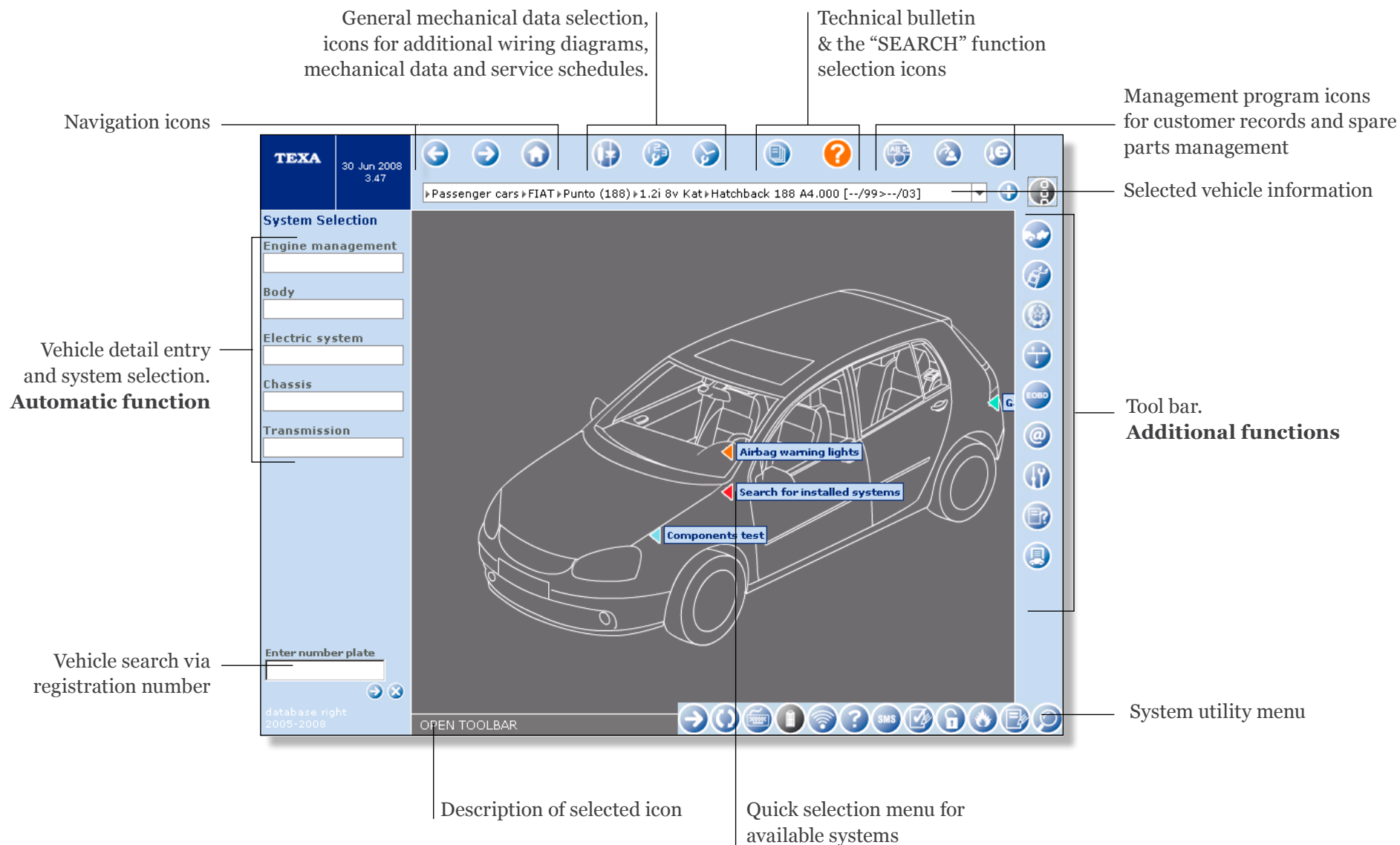
## GENERAL DIAGNOSTICS

									
									
Information on ABS and engine management electronics	●	●	●	●	●	●	●	●	●
Electronic information (comfort and safety systems)	●		●	●		●	●		●
Mechanical technical data	●	●	●	●	●	●	●	●	●
Customer management	●	●		●	●		●	●	
Technical bulletins*	●	●	●	●	●	●	●	●	●
“SEARCH” Powered by Google*	●	●	●	●	●	●	●	●	●
Maintenance information	●		●	●		●			
Air-conditioning technical data	●		●	●		●			
Timing belts	●		●						
Measurements, Oscilloscope, Multimeter, Battery test, TNET	●	●	●	●	●	●	●	●	●
Auxiliary electrical info	●								
Spare parts management	●			●			●		

\* Applies for specific services

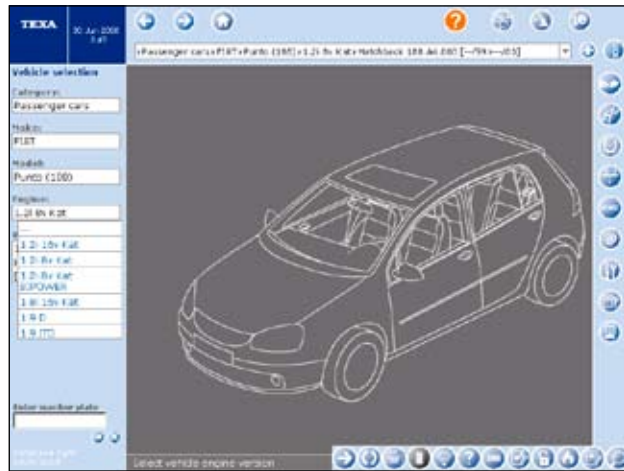
# IDC3.

## THE WORKING ENVIRONMENT FOR CARS AND COMMERCIAL VEHICLES

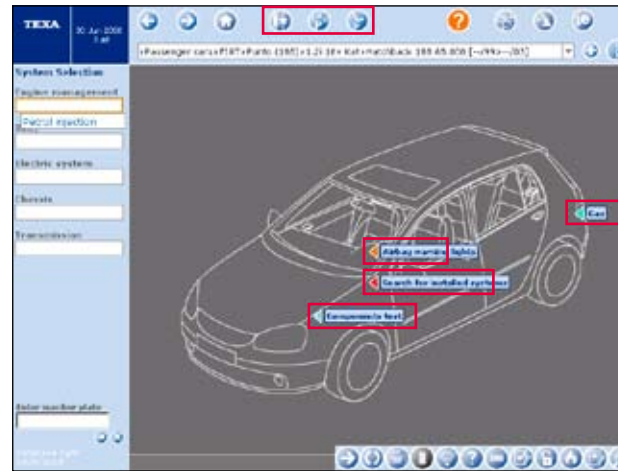




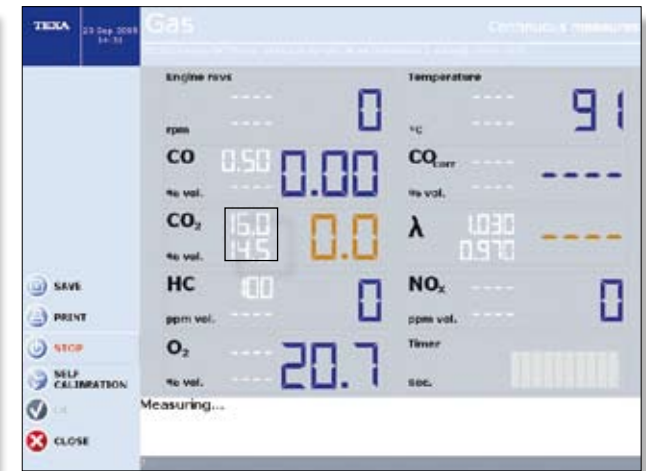
# AUTOMATIC OPERATION BY SELECTING THE VEHICLE



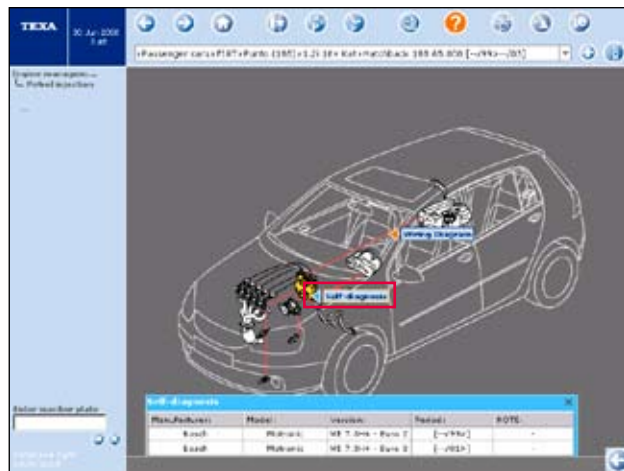
Select the make, model and engine. IDC3 will initially display general electrical, mechanical and maintenance information...



...specific selection icons will appear on the vehicle silhouette and at the top of the screen, to indicate which information is available.



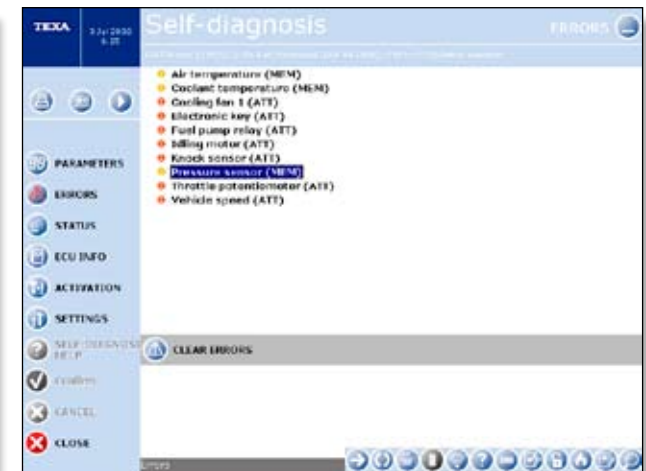
For example, select the "GAS" icon to directly access the emission analysis program. The specific reference limits for the selected model will be displayed.



A specific electronic system to be tested can then be selected, accessing the wiring diagram and diagnostic program.



For example, by selecting the auto diagnostics program and connecting to the ECU, the list of engineering parameters can be accessed, and displayed on a graph.

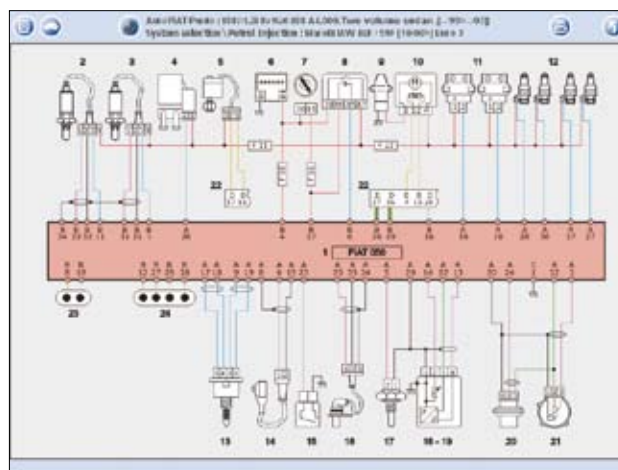


If the ECU has detected errors, these can be displayed clearly and completely.

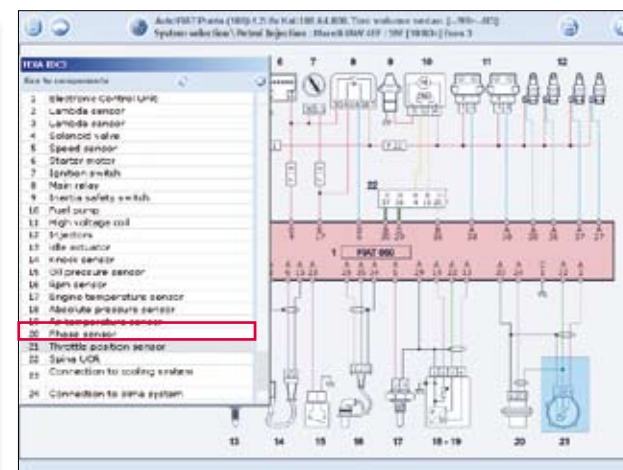
# INSTANTLY AVAILABLE DIAGRAMS, INFORMATION AND TOOLS



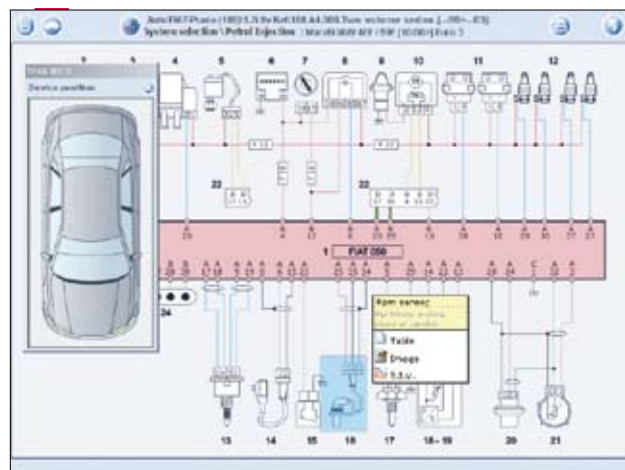
Select the wiring diagram icon, to display the circuits of the selected electronic systems...



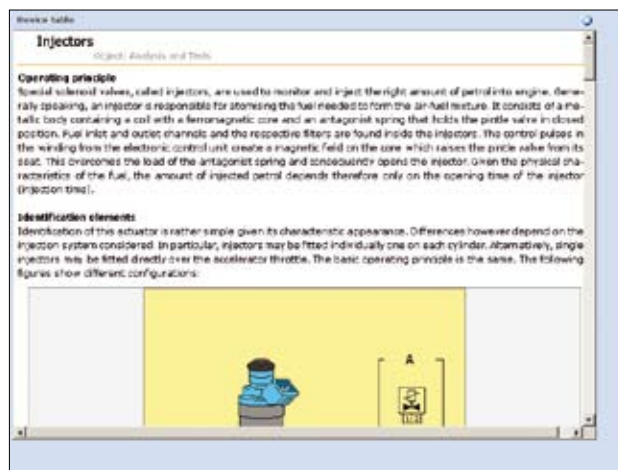
...for all makes and electronic systems. The wiring diagrams are displayed according to the TEXA standard.



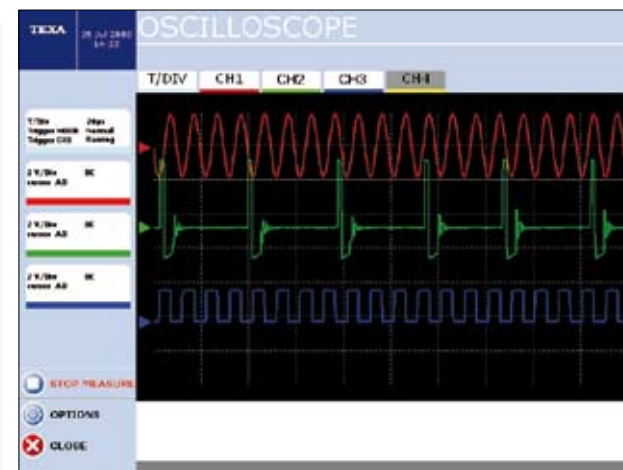
Select the “COMPONENT KEY” icon to locate the component on the diagram, simply by identifying the item from the list.



Alternatively, select the “LOCATION” icon and select a component on the diagram: a red dot will appear indicating the position of the component in the vehicle.



A list of information is available for each component in the wiring diagram. A complete technical datasheet can be shown for each...



...alternatively, the Oscilloscope program, already configured for electrically testing the specific component, can be activated directly.



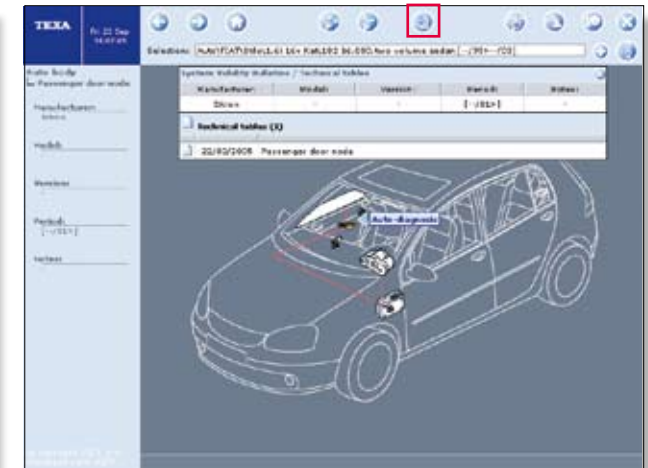
# TECHNICAL BULLETINS



By selecting a vehicle and using the bulletin icon, a list of technical bulletins or test cards are accessible.



The bulletins provide information regarding repair procedures for a specific problem. The example displays a technical bulletin relating to a problem with poor acceleration.



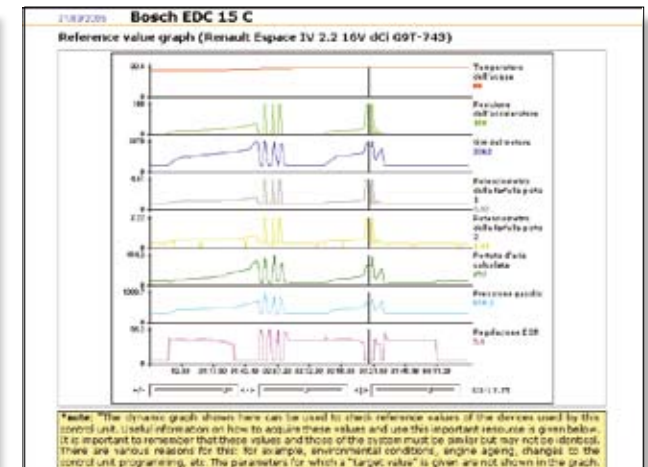
It is possible to retrieve the “test card” from the list which provides an overview of the selected electronic system’s functions.



In this example the electronic system’s control unit is displayed. The test card provides information regarding its function, technical characteristics...

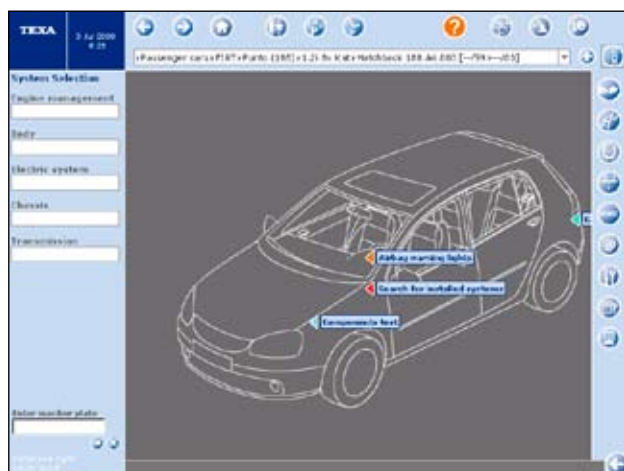


...The location and the procedure (video example) of the “removal and installation” of the control unit...

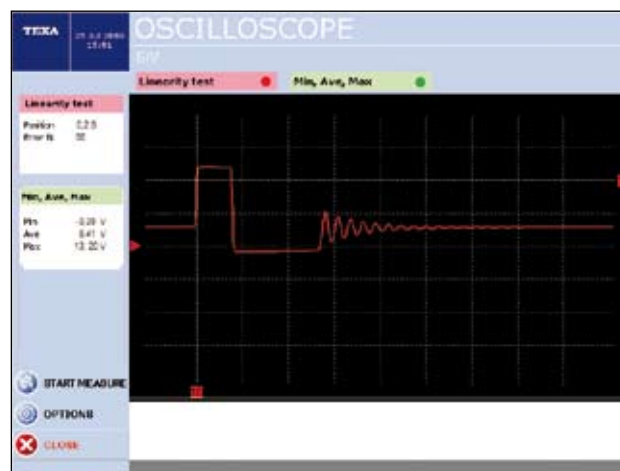


...Sample recordings are also available and may be used for comparison on a defective systems.

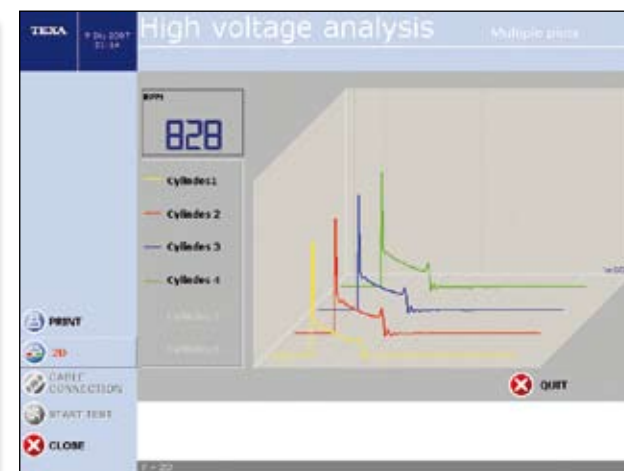
## MANUAL OPERATION BY SELECTING THE TOOLS



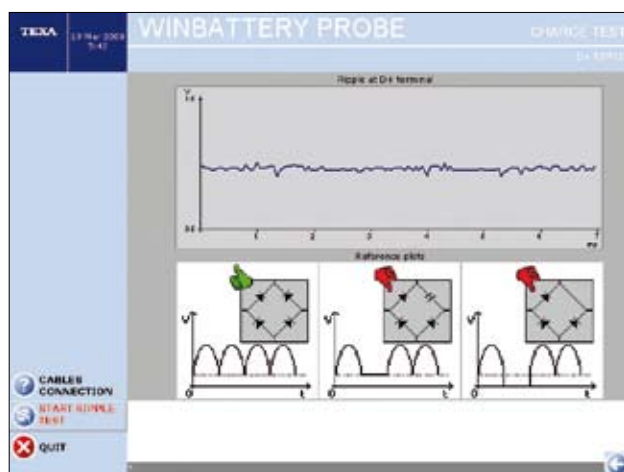
This operating mode is used to run the individual programs irrespective of the make and model of the vehicle. From the icons on the right-hand toolbar...



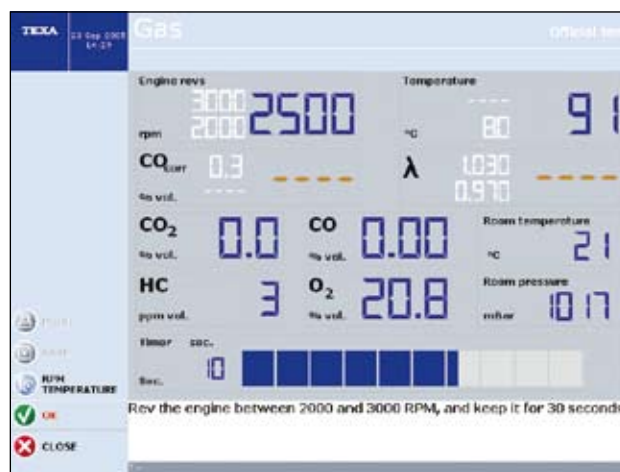
...select, for example, the OSCILLOSCOPE to directly call up and use this tool in manual mode.



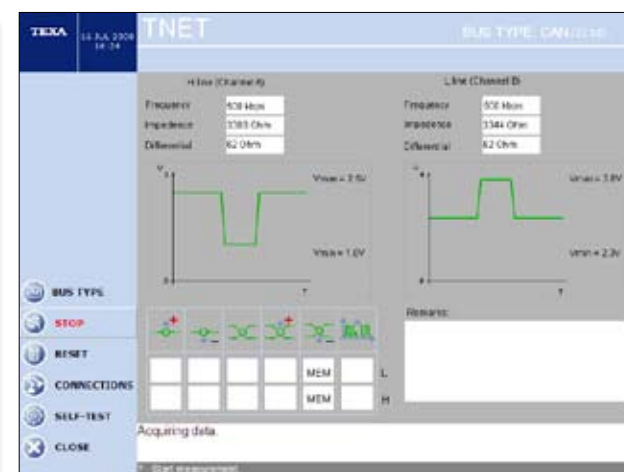
The oscilloscope function can be used to test the operation of the ignition system (high voltage) for petrol engines. Coils, spark plugs and cables, everything is under control.



Click the icon to test the starting and charging system, the program proposes a complete series of test for each component involved, i.e. the battery, alternator, start motor etc



Click the emission testing icon access the options for choosing diesel or petrol engines and then running a complete test.

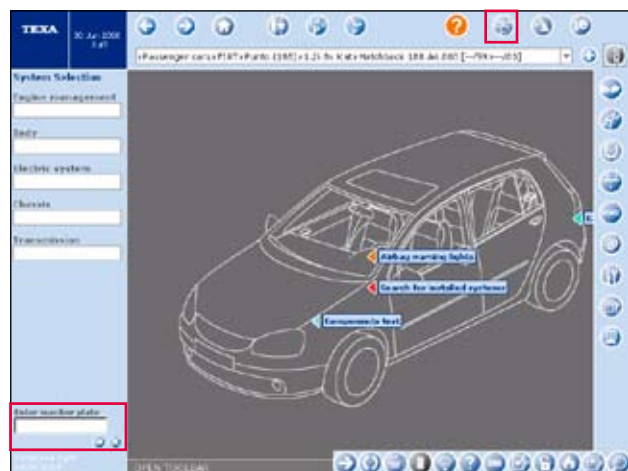


Click the TNET tool icon, on the other hand, accessing a simple and fast program for analysing the electrical operation of the communication networks (CAN, VAN, LIN), safely identifying any faults.

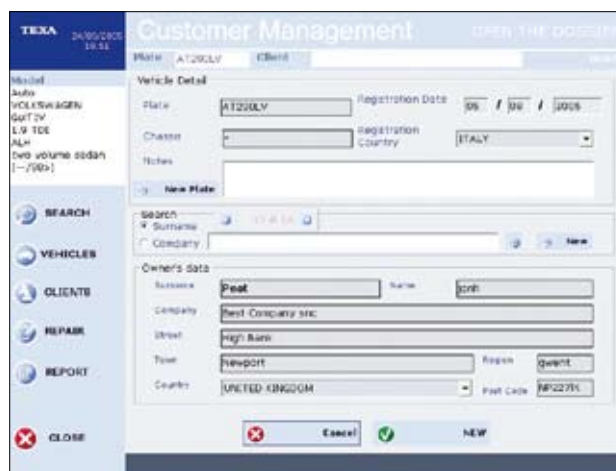




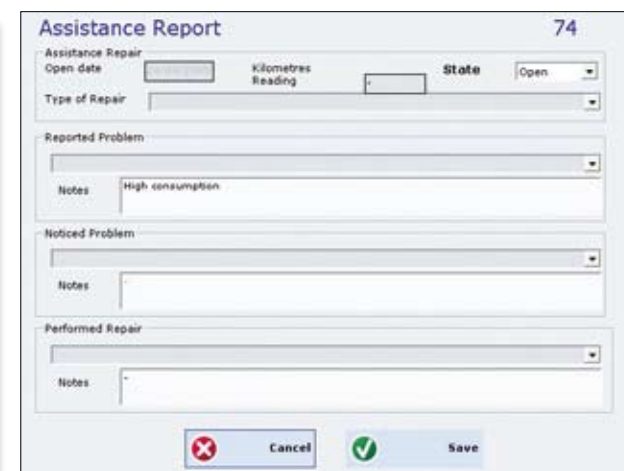
## NEW CUSTOMERS AND REPAIR DOCUMENTATION



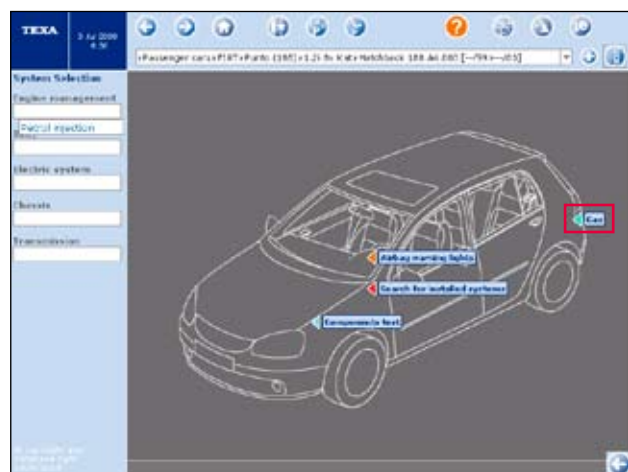
Once the vehicle information has been saved, the data may be retrieved by entering the vehicle registration details.



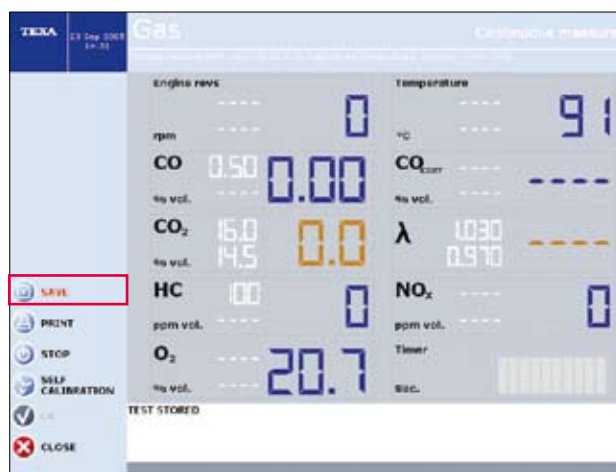
When the registration number is saved a screen is available where the Customer details and other relative data may be entered...



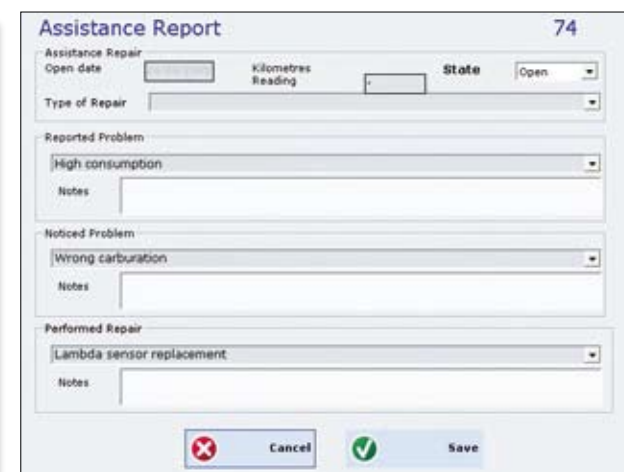
At this stage, the technician may add any details regarding the problem described by the customer in order to begin the repair process. By selecting the SAVE icon, the main page will appear.



Within the example relating to an report of excessive fuel consumption, the technician carries out an analysis on the vehicle's emissions by retrieving the programme via the GAS icon.

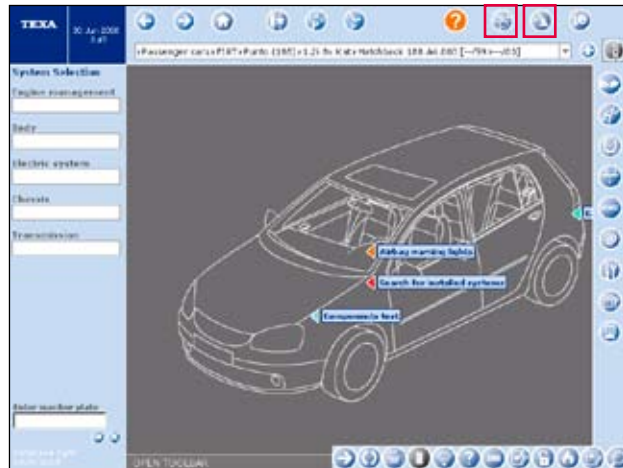


Once the measurement have been made..., the operator can save the test details by clicking on SAVE icon.

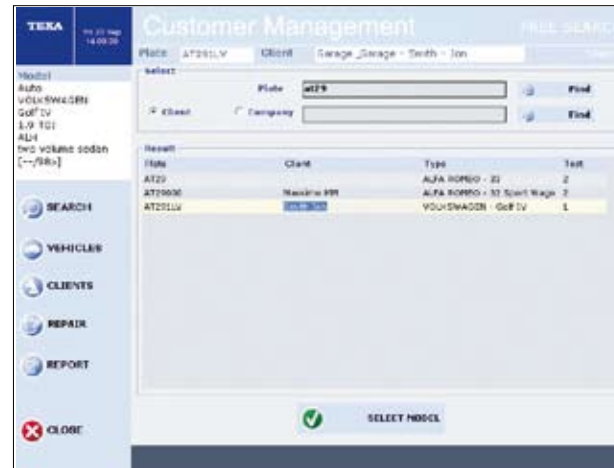


Once the repair is completed, the procedure may be recorded. As we are about to see; this information may be retrieved for future reference.

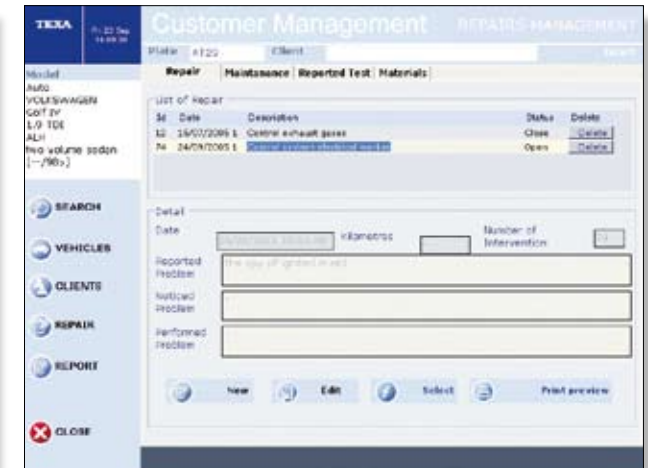
# PREVIOUS CLIENTS, REPORTS AND RECORDED TESTS



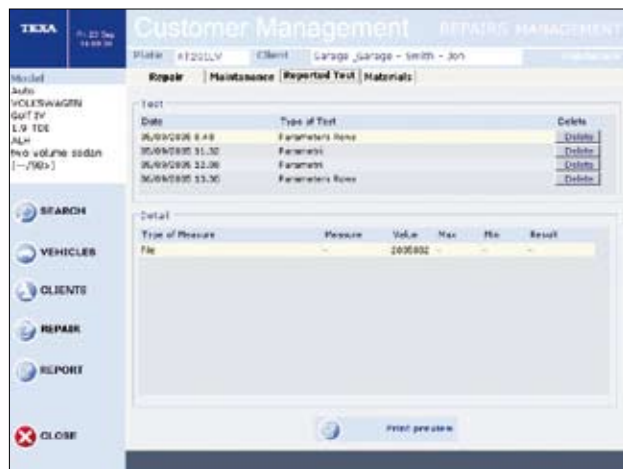
If a previous customer should return to the workshop; the technician may retrieve the vehicle customer information via the VEHICLE NUMBER PLATE or DATA MANAGEMENT icon.



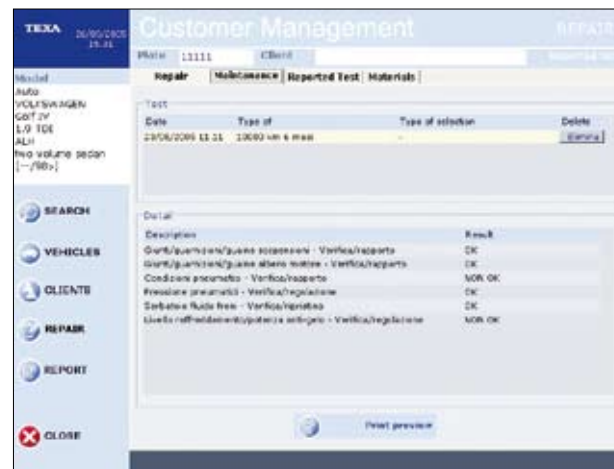
The operator may retrieve the information via the customer or company details. Once the vehicle has been identified, it is possible to retrieve previous repair information or proceed with new tests.



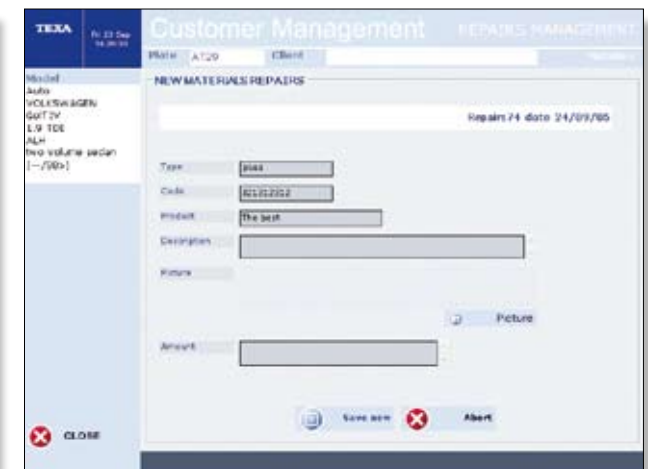
By selecting the REPAIR icon, the operator may view all the procedures carried out previously for the vehicle. The example displays a procedure relating to gas analysis.



At this stage, the operator may retrieve data regarding all previous procedures. The example displays the results of emissions analysis....

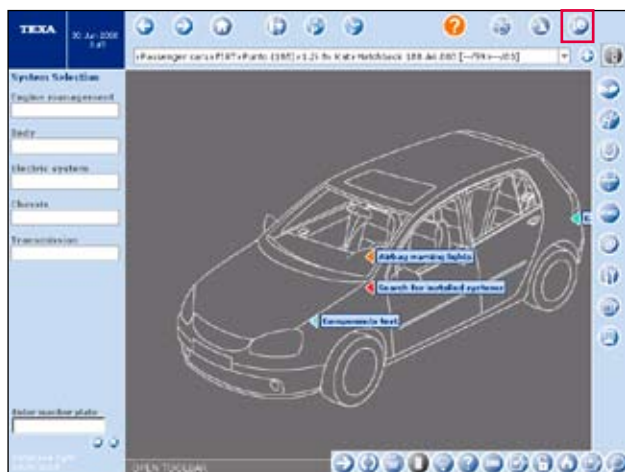


...service schedule check list...



....parts used during the repair.

# SPARE PARTS



By selecting the “SPARE PARTS MANAGEMENT” icon; a useful tool may be retrieved which will allow the technician...



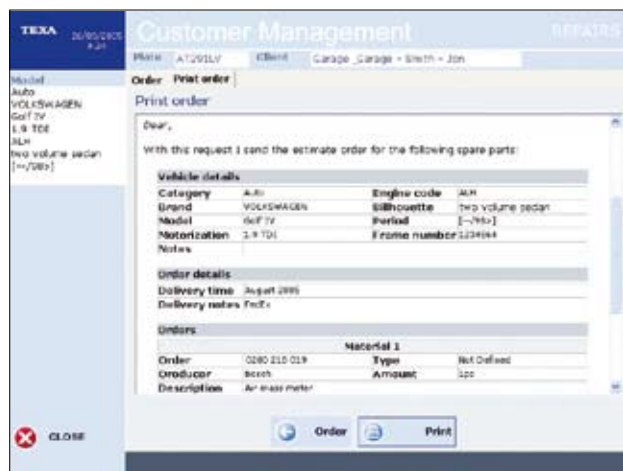
...to produce an electronic parts order...



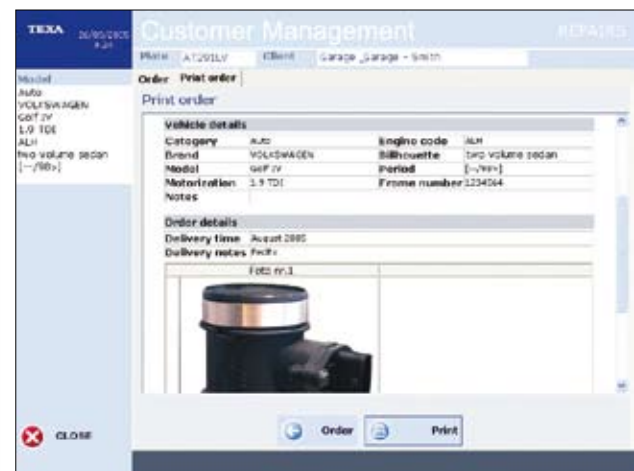
On this page the technician can add details of all required parts required for the repair.



The program allows the option to attach an image of the required part (which may be added using the tool's camera) which aids in identification.



This may be viewed and printed...



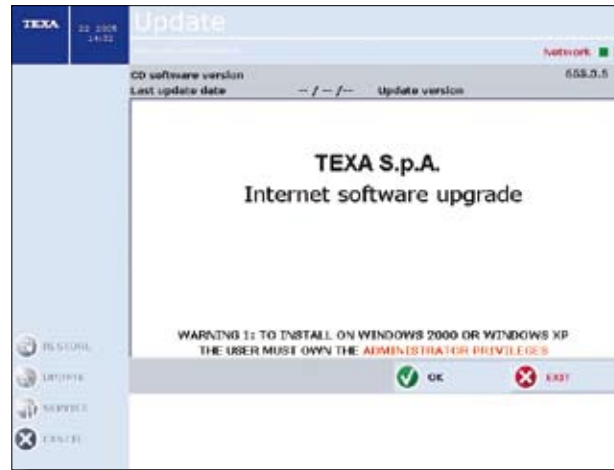
...and finally e-mailed or faxed directly.



# UPDATES



The “UPDATES” icon allows automatic Internet connection to check for any available software updates.



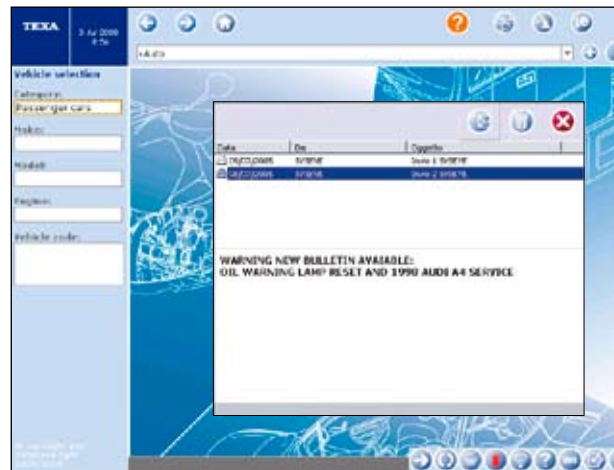
This page shows if any software updates are available.



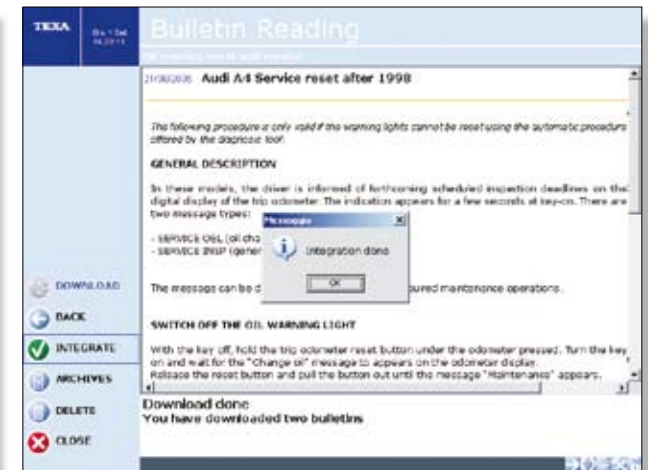
The “OK” icon allows the download to take place automatically.



An SMS informs the operator that a new technical bulletin is available for download. (only for Italian market)



General information regarding available bulletins may be viewed on this page. (only for Italian market)



The bulletin contents may be viewed and added to the information to the general data bank. (only for Italian market)

## DETAILS



On-off switch with status indicator LED.



Moisture and dust proof keyboard and IR receiver for infrared remote control.



Optical mouse with special housing on the work surface.



Main on-off power switch with safety device.



Hinged system for folding the monitor down on the work surface.



All connectors are easily accessible on the back of the work surface.



Optional Wi-Fi module antenna in a corner of the work surface.



DVD drive for reading and installing operational software.



Cable reel for keeping the power leads tidy.



Ergonomic trolley handle.



Printer compartment with cover and open lock.



Bracket for attaching the NAVIGATOR TX RANGE, TRIBOX Mobile and RC3 modules.

# MULTI PEGASO TECHNICAL SPECIFICATIONS

- Multipurpose station on mobile four-wheel trolley
- Robust power coated steel structure
- Wireless connection with all TEXA interfaces and modules
- Can be used to analyse emissions of petrol and diesel engines
- Can be used to diagnose car and commercial vehicle electrical/electronic systems via connection with TEXA diagnostic interfaces

**Processor:** Pentium III 800 MHz, 40 GByte HD

**DRAM:** 512 MB

**Operating system:** Windows XP embedded

**Connectivity:**

2 RS232 serial ports on male DB9,

1 wall adapter socket,

1 SVGA video connector on male DB15,

6 external USB 2.0 ports, 2 RJ11 telephone jack (IN-OUT),

1 RJ45 Ethernet LAN connector, 100 Mbit.

1 IR input for remote control

**Bluetooth connectivity:** via external USB key

**Wi-Fi connectivity:** via optional internal card, external antenna

**GSM connectivity:** via optional module mounted internally, external antenna

**DVD/CD drive:** on internal USB 2.0 line

**Dimensions (with monitor closed):** 760x660x1570 (1185) mm

**Weight:** 55 kg

**Printer technical specifications**

**Print technology:** ink jet, with automatic sheet resetting in case of jamming.

**Black printing speed:** up to 20 pages per minute

**Colour printing speed:** up to 13 pages per minute

**Memory capacity:** 8 MB RAM

**Average power consumption:** 35 Watt, when running

**Paper tray capacity:** 50 A4 sheets





1. Monitor closing handle
2. 17" LCD monitor
3. Housing for optional GPRS (GSM) antenna
4. DVD drive
5. Wi-Fi antenna
6. IR port for infrared remote control

7. Printer compartment
8. Printer
9. Connectors for Autopower tool recharging
10. Castor wheels
11. Trolley handle
12. Cable reel

13. Main on-off switch
14. Power cable reel
15. Side stand for Autopower tools
16. Mains tool power cable

# TECHNICAL SPECIFICATIONS

## GASBOX Autopower and OPABOX Autopower

### TECHNICAL SPECIFICATIONS

**Temperature:** +5°C to +40°C

**Pressure:** 850 hPa to 1025 hPa (GASBOX); 850 hPa to 1060 hPa (OPABOX)

**Humidity:** 0 % RH to 95 % RH

**Chamber effective length:** 200 mm (OPABOX)

**Chamber temperature:** 75°C (OPABOX)

**Maximum heating time:** 5 minutes (OPABOX)

**Light source:** Green LED

**Condensate drainage:** Continuous and automatic

**Reset:** Electronic - automatic.

**Calibration:** Automatic with sample gas cylinder (GASBOX);  
Electronic and automatic (OPABOX)

**Feedback time:** <15s (probe length 6 m)

**Heating time:** Max. 60 seconds

**Storage temperature:** Min. -20 Max. +60 °C

**Physical dimensions (without trolley):** 460 x 200 x 250 mm

**Physical dimensions (with trolley):** 460 x 200 x 480 mm

**Weight:** 15 kg (approx., complete with trolley)

### ELECTRICAL SPECIFICATIONS

**Power supply:** 2 x 12 V 7 A/h lead batteries

**Power input (Max):** 80 W (2 x 1 A fast-blow fuses)

**Recharge with power supply:** 115-230 VAC  $\pm$  10%, 50-60 Hz  $\pm$  2%

**Automatic signalling of changes in battery voltage outside set range:** 11.3 V to 14.5 V

### HARDWARE AND SOFTWARE SPECIFICATIONS

**Serial output:** RS232 standard with proprietary protocol  
for connection to PC

**Wireless output:** *Bluetooth*

**Clock:** Internal, supplied by buffer battery

**Control system:** SW CD NERO Win PC-compatible

**GASBOX Autopower****OPABOX Autopower**

1. Carry handle
2. Bluetooth antenna
3. CS9000 column control
4. RS232 connector
5. Filter tray
6. Activated carbon filter
7. GAS probe socket

8. GAS-IN fitting
9. RPM socket (optional probe)
10. TEMP. °C socket (optional probe)
11. OUT-H<sub>2</sub>O fitting
12. OUT-GAS fitting
13. On switch
14. External power supply connector

15. Red LED, battery low
16. Green LED, battery charged
17. RPM/temperature probe socket (optional)
18. Gas inlet fitting
19. Charge connectors

# RC2 AND RC3 TECHNICAL SPECIFICATIONS

- Universal RPM counter for petrol and diesel engines
- Compatible with engine oil temperature sensor
- Connection with processing unit via serial or USB cable and *Bluetooth*
- Device for completing emission analysis for use with GASBOX Autopower and OPABOX Autopower
- Three different methods for measuring RPM

## RC2

**Main processor:** MB90F591 16MHz

**External power supply:** 8 to 32 Volt

**Serial resources:** 1 standard RS232 connection

**Wireless connection to PC:** *Bluetooth* technology

**Petrol and diesel readings from vehicle battery:** 12V DC and 24V DC system management

**Analogue petrol reading:** Induction clamp

**Analogue diesel reading:** Piezoelectric clamp

**Operating temperature:** +0°C / +45°C

**Storage temperature:** -20°C / +60°C

**Operating humidity:** 10% to 80% non-condensing

**Dimensions (with antenna):** 130 x 150 x 27 mm

**Weight:** 0.36 kg

## RC3

**Main processor:** MB90F591 16MHz

**External power supply:** 8 to 32 Volt

**Resources serial:** 1 USB connection - 1 standard RS232 connection

**Wireless connection to PC:** *Bluetooth* technology

**Petrol and diesel readings from vehicle battery:** 12V DC and 24V DC system management

**Analogue petrol reading:** Induction clamp

**Analogue diesel reading:** Piezoelectric clamp

**EOBD identification:** ISO9141-2, ISO14230, SAE J1850 PWM, SAE J1850 VPW, CAN ISO11898

**Operating temperature:** +0°C / +45°C

**Storage temperature:** -20°C / +60°C

**Operating humidity:** 10% to 80% non-condensing

**Dimensions (with antenna):** 155 (227) x 162 x 63 mm

**Weight:** 0.8 kg





1. Power supply cable from battery and microphone
2. RS232 connection
3. Blue LED, *Bluetooth*
4. Oil temperature sensor connection
5. RPM induction sensor connection
6. Piezoelectric sensor connection



1. Operating status LEDs
2. RS232 connection
3. *Bluetooth* antenna
4. Diagnostic socket input
5. USB input
6. Scratchproof feet

## CLEAR AGREEMENTS AND TRANSPARENCY RIGHT FROM THE START

When you purchase a TEXA package you also subscribe to a “PURCHASE ORDER” contract that establishes the purchase conditions and all of your rights. (certain markets only)

### Service

The TEXA service network guarantees customers excellent coverage, a vast range and exclusive service.

### Product warranty

TEXA guarantees the product against faults and manufacturing defects ascertained and recognised by its service network, for a period of twenty-four months from the date of delivery or activation of the software. All repairs under warranty, unless otherwise agreed on in writing, must be carried out at an authorised service centre or by TEXA.

### Software end-user license

TEXA authorises the customer to use the software contained in the PRODUCTS purchased based on a non-exclusive end-user license agreement for the sole purposes described in the PRODUCT user manual. In relation to the end-user license agreement, “software” refers to the program installed on the PRODUCT, and “license” the right to use or access a specific copy of such software.

### Products

The products undergo continual development and consequently are subject to change; such changes may involve constructional modifications to the electronics, the mechanics and the cosmetics (including the colour and decorative elements).

The information and data provided in the brochures and advertising in general are purely indicative.

## TEXA FINANCIAL SERVICE\*

TEXA has for years been offering financial solutions that are unrivalled on the market, allowing DEALERS to offer customers particularly favourable terms of payment for purchasing TEXA tools and equipment.

“SISTEMA” is a simple formula that offers complete freedom in extending payments on your new TEXA tool based on your needs.

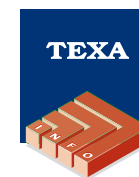
Contact your TEXA dealer for further information. They will then provide you an example of a personalised payment plan.



## CALL CENTRE ASSISTANCE\* AN EXPERT ALWAYS ON HAND TO HELP

Call Centre assistance and the prompt publication of technical bulletins, sent directly to the tool via SMS or via the Internet, are the main services now offered by TEXA to help technicians in their everyday work.

Help from professionals at the TEXA Call Centre is just a phone call away.



\* Check availability in your country with your dealer.

## TEXAEDU\*

### YOUR PROFESSIONAL DEVELOPMENT

In order to support and promote the professional development of its customers, TEXA has combined its range of tools and services with an exclusive training program: the TEXAEDU centre.

The training courses involve both the theoretical and practical aspects. The use of the tools is demonstrated directly in the classroom, right from the very first minute of the courses, with specific details on strategies for recognising errors in electronic control units or reading and interpreting a signal from an air mass meter.

With its vast range of diagnostics solutions, TEXA fully understands the real problems involved in auto repair work, and this is the basis for its training courses. By enrolling in the courses and obtaining the PROFESSIONAL SPECIALISATION CERTIFICATE, technicians can guarantee their professional future.



\* Check availability in your country with your dealer.

## UNI EN ISO 9001:2000

TEXA strongly believes and invests in the quality of its organisation, products and services. The TEXA quality project is based on the following principles:

### Customer focus

TEXA has always been attentive to the needs of its customers, and is committed to continually satisfying their requirements and even exceeding their expectations;

### Personnel involvement

At TEXA, the personnel, at all levels, represent the essence of the organisation; their complete involvement in the processes means their skills can be best used to serve the company;

### Process approach

TEXA organises all its activities into a system of interrelated processes that together contribute to the achievement of the company goals, based on principles of effectiveness and efficiency;

### Partnership with suppliers for mutual benefit

TEXA aims to establish strategic partnerships with its suppliers, convinced that close cooperation improves the ability of both parties to create value and translates into advantages for the customer;

### Continual improvement

For TEXA, continual improvement of its performance is a permanent objective. TEXA is certified in accordance with UNI EN ISO 9001:2000.



\* Check availability in your country with your dealer.



**TEXA**

*For international customers:*

**TEXA S.p.A.**

Via I Maggio, 9  
31050 Monastier di Treviso  
Treviso - ITALY  
Tel. +39 0422 791311  
Fax +39 0422 791300  
www.texa.com - info@texa.it

*For UK, Ireland and USA customers:*

**TEXA UK Ltd.**

34 Churchill Way  
Lomeshaye Industrial Estate  
Nelson - Lancashire  
BB9 6RT United Kingdom  
Tel. 01282 606 787 - Fax 01282 604 240  
www.texa.co.uk - info@texa.co.uk



Use your mobile phone to scan this symbol and receive further information on TEXA S.p.A. and its products\*.

\* Scanning this symbol will create a WAP push link that accesses the <http://www.texa.mobi> website without having to enter the address manually in your browser. The contents of the TEXA site can be browsed freely, while the connection charges vary based on the rates applied by your service provider. If your phone doesn't have software for reading QR codes, go to one of the numerous websites that offer these for free.

**COMPANY  
WITH QUALITY MANAGEMENT  
SYSTEM CERTIFIED BY DNV  
=ISO 9001: 2000=**

The data, descriptions and illustrations may change compared to those described in this brochure. TEXA S.p.A. reserves the right to make changes to its products without prior notice.

The **BLUETOOTH** brand is the property of Bluetooth SIG, Inc., U.S.A., and is used by TEXA S.p.A. under license.



**MADE IN EUROPE**

Copyright TEXA S.p.A.  
**cod. 8800296**  
August 2008 - Inglese  
V.1.0