

Low height jacks



Accessories

1002 LF



Rubber pad protects the shape and coating of the lifting point.

60245



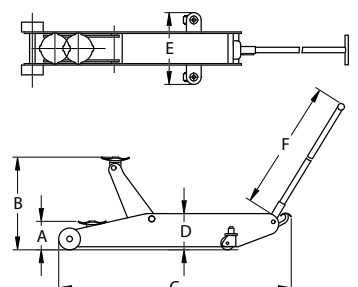
Hard rubber wheels recommended to reduce the risk of damaging smooth, painted or tiled floors. (Factory mounted)

3068 + 40mm



Saddle for extra height or accessing lifting points situated behind skirts, etc.

Model	Max (Ton)	A (mm)	B (mm)	C (mm)	D (mm)	E (mm)	F (mm)	Kg
① 2T-C	2	80	500	730	160	380	925	37



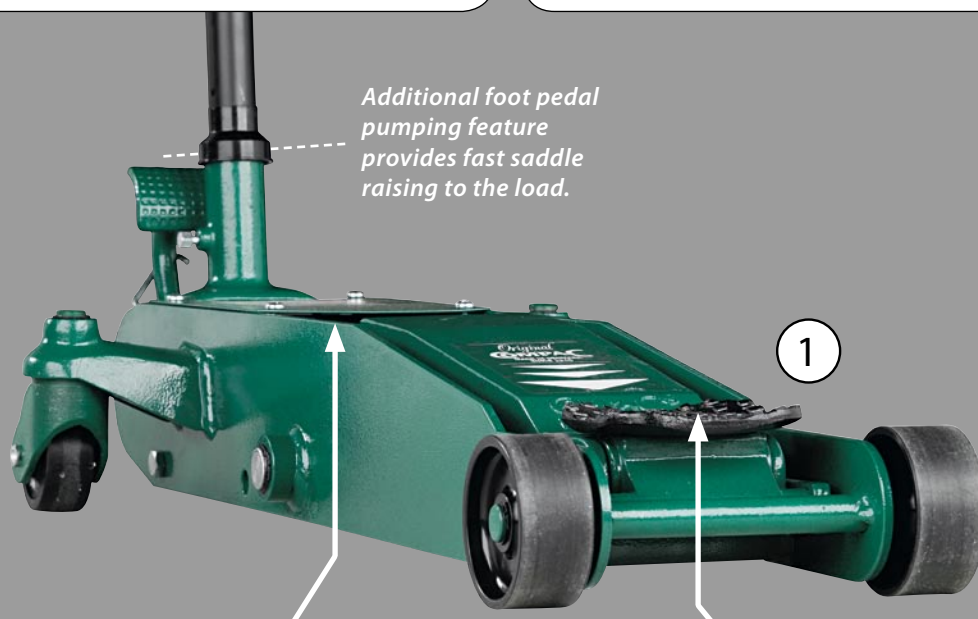
Jack for easy access under low vehicles



Ideal for support of engine/ transmission components during repair, with vehicle in low height.



Long reach chassis improves access to lifting points deep under vehicles.



Additional foot pedal pumping feature provides fast saddle raising to the load.

Low clearance chassis for access under "any" vehicle.

Ultra low entry height.

Accessories

60245



Hard rubber wheels recommended to reduce the risk of damaging smooth, painted or tiled floors.
(Factory mounted)

1002 LF



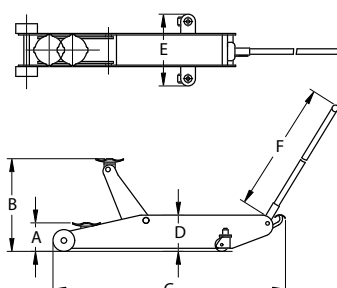
Rubber pad protects the shape and coating of the lifting point.

3068
+ 40mm



Saddle for extra height or accessing lifting points situated behind skirts, etc.

Model	Max (Ton)	A (mm)	B (mm)	C (mm)	D (mm)	E (mm)	F (mm)	Kg
① 2T-F	2	90	500	950	126	380	925	41



Jack for vans, 4WDs and minibuses



Accessories

1002 LF



Rubber pad protects the shape and coating of the lifting point.

3068 + 40mm



Saddle for extra height or accessing lifting points situated behind skirts, etc.



Low chassis height improves access to lifting points deep under most vehicles. Ideal for vans, 4WDs and minibuses.

Ergonomically designed handle for operator comfort. Rubber coated.

"Lift-and-turn" lowering system prevents unintentional lowering.

Additional foot pedal pumping feature provides fast saddle raising to the load.

Large diameter swivel wheels for easy handling.

Safety lowering control valve for safe lowering even under maximum load.

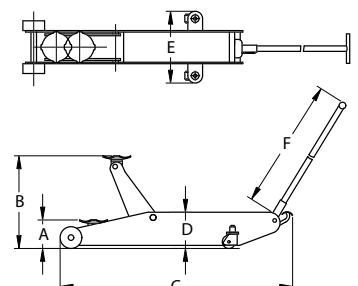
Pressure relief valve prevents overloading.

Powder coated finish.

Heavy duty fully welded structure in high quality steel.

Noise reducing nylon wheels.

Model	Max (Ton)	A (mm)	B (mm)	C (mm)	D (mm)	E (mm)	F (mm)	Kg
① 3T-C	3	115	500	1015	170	380	925	42



Jacks with polyurethane bogie wheels

The polyurethane rollers and wheels provide noiseless manoeuvring. The wide double rollers are ideal for floors with gratings. The four rollers are fitted with ball bearings for added manoeuvrability.



Ergonomically designed handle for operator comfort. Rubber coated.

Accessories



Rubber pad protects the shape and coating of the lifting point.

Min. height 95 mm.

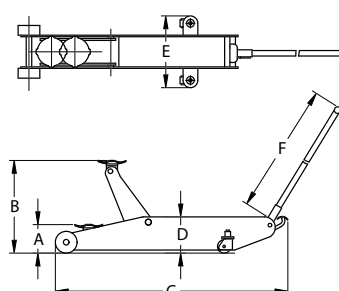
Additional foot pedal pumping feature provides fast saddle raising to the load.

Low chassis height improves access to lifting points deep under most vehicles.

The bogie system is ideal for workshops with uneven floors and outdoors - where small obstacles and gratings are easily crossed.

Ideal for support of engine/transmission components during repair, with vehicle in low height.

	Model	Max (Ton)	A (mm)	B (mm)	C (mm)	D (mm)	E (mm)	F (mm)	Kg
①	2T-C Bogie PU	2	95	500	800	170	380	925	42
②	2T-F Bogie PU	2	100	500	1010	133	380	935	46



High lift jacks with polyurethane bogie wheels

The polyurethane rollers and wheels provide noiseless manoeuvring. The wide double rollers are ideal for floors with gratings. The four rollers are fitted with ball bearings for added manoeuvrability.

Ergonomically designed handle for operator comfort. Rubber coated.

Max. height 800 mm. (1,5T-HC Bogie PU)

Additional foot pedal pumping feature provides fast saddle raising to the load.

The bogie system is ideal for workshops with uneven floors and outdoors - where small obstacles and gratings are easily crossed.

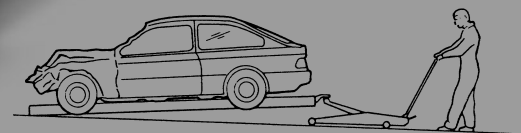
Accessories

1002 LF

Rubber pad protects the shape and coating of the lifting point.

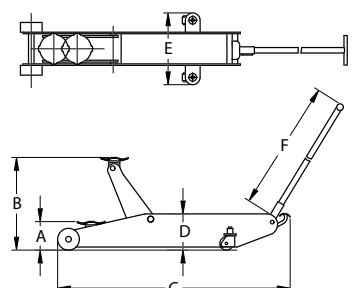
Noiseless polyurethane rollers and wheels.

Long reach chassis improves access to lifting points deep under vehicles.



Ideal for loading and unloading body jigs. (Chassis alignment systems).

	Model	Max (Ton)	A (mm)	B (mm)	C (mm)	D (mm)	E (mm)	F (mm)	Kg
③	1.5T-HC Bogie PU	1.5	110	800	1115	160	380	925	57
④	2T-HC Bogie PU	2	110	745	1115	200	380	1045	59



High capacity jacks 4 - 20 ton

Ergonomically designed handle for operator comfort. Rubber coated.

"Lift-and-turn" lowering system prevents unintentional lowering.

Additional foot pedal pumping feature provides fast saddle raising to the load.

Safety lowering control valve for safe lowering even under maximum load.

Large diameter swivel wheels for easy handling.

Long reach chassis improves access to lifting points deep under vehicles.

Accessories.
(Nr. 60200)

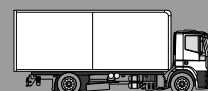
Chassis height 225 mm.

Min. height 165 mm.

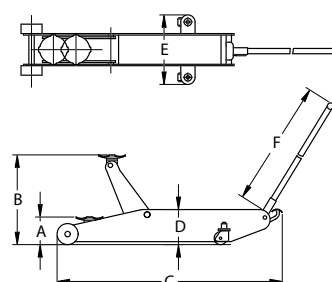
Accessories

60200

Air rubber tyres fitted on point of balance enhance manoeuvrability of large jacks. Will flatten under load.



	Model	Max (Ton)	A (mm)	B (mm)	C (mm)	D (mm)	E (mm)	F (mm)	Kg
①	4T-C	4	145	560	1270	200	465	1045	70
②	5T-C	5	145	560	1270	200	465	1045	71
③	6T-C	6	155	570	1395	210	470	1045	90
④	10T-C (G3)	10	165	580	1410	225	435	1045	106
⑤	10T-C (G2)	10	170	670	1700	280	470	1045	136
⑥	15T-C	15	200	600	1790	325	475	1045	162
⑦	20T-C	20	200	600	1790	325	475	1480	164

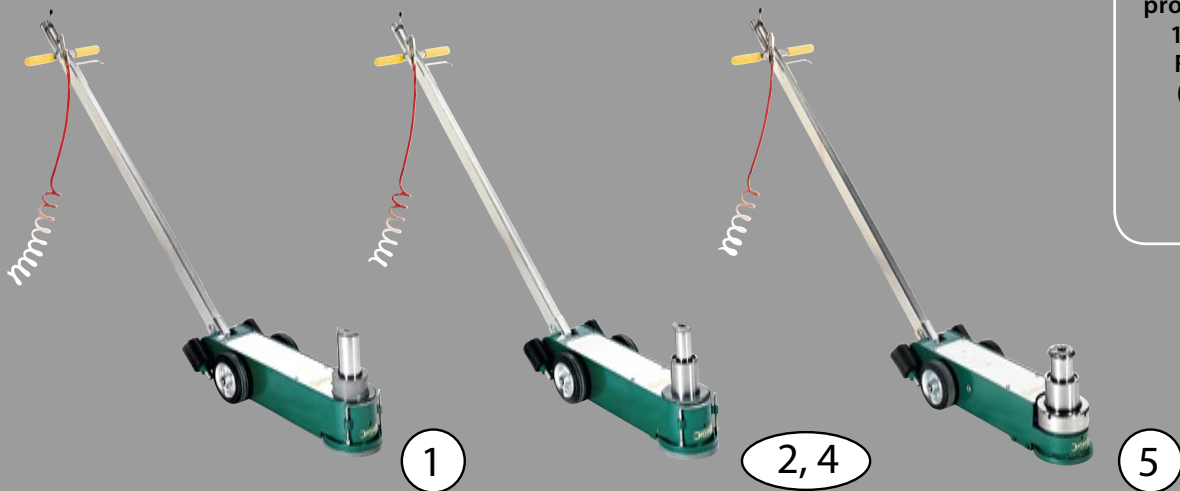


Air hydraulic jacks

Low chassis height improves access to lifting points deep under most trucks and buses.
(A3216-C and A4411-C)



3



Accessories

2363

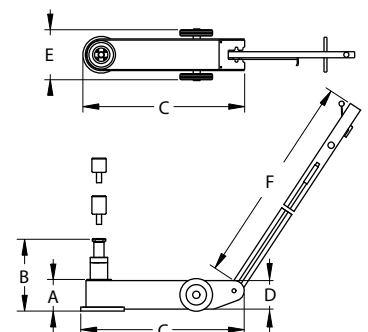


Optional 250 mm extension for vehicles with high ground clearance.
(Not available for A3216-C)



Optional long reach telescopic handle provides up to an extra 1000 mm of reach. Factory mounted.
(Not available for A3216-C)

	Model	Max (Ton)	A (mm)	B (mm)	C (mm)	D (mm)	E (mm)	F (mm)	Kg
①	AV20-C	20	220	350	760	220	310	1400	52
②	A2510-C	25/10	180	365	760	175	310	1400	54
③	A3216-C	32/16	150	300	495	168	310	1230	43
④	A4422-C	44/22	218	440	800	218	310	1400	82
⑤	A4411-C	44/22/11	150	330	800	150	310	1400	68



High lift jacks 1,5 - 2 ton



Accessories

1002 LF

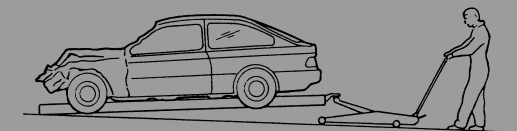


Rubber pad protects the shape and coating of the lifting point.

60245

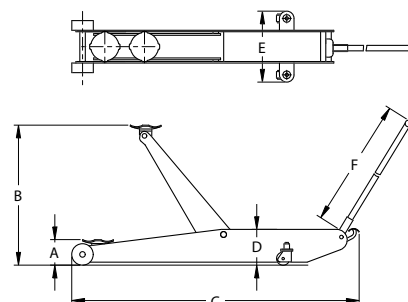


Hard rubber wheels recommended to reduce the risk of damaging smooth, painted or tiled floors. (Factory mounted)



Ideal for loading and unloading body jigs. (Chassis alignment systems).

	Model	Max (Ton)	A (mm)	B (mm)	C (mm)	D (mm)	E (mm)	F (mm)	Kg
①	1.5T-HC	1.5	98	800	1050	160	380	925	52
②	2T-HC	2	98	735	1035	200	380	1045	53



High lift jacks 3 - 10 ton



Accessories



Air rubber tyres fitted on point of balance enhance manoeuvrability of large jacks. Will flatten under load.

	Model	Max (Ton)	A (mm)	B (mm)	C (mm)	D (mm)	E (mm)	F (mm)	Kg
③	3T-HC	3	130	860	1620	210	460	1045	88
④	5T-HC	5	180	960	1830	350	475	1045	181
⑤	8T-HC	8	180	960	1830	350	475	1045	186
⑥	10T-HC	10	210	770	1700	290	475	1045	139

