

geoliner 670 XD

Imaging Wheel
Alignment Systems



High-resolution imaging
technology delivers speed
and accuracy

HOFMANN® 

GEOLINER 670 XD

FULLY FEATURED, HIGHLY ACCURATE WHEEL ALIGNMENT SYSTEMS



VERSATILE, ACCURATE HARDWARE

- High-resolution cameras produce accurate, live alignment readings and diagnostic data
- Passive front and rear XD targets improve durability with no electronics to damage
- Advanced XD targets and AC400 clamps are lightweight, durable and impact resistant

ADVANCED DIMENSIONING*

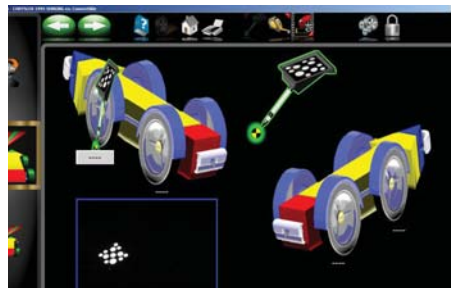
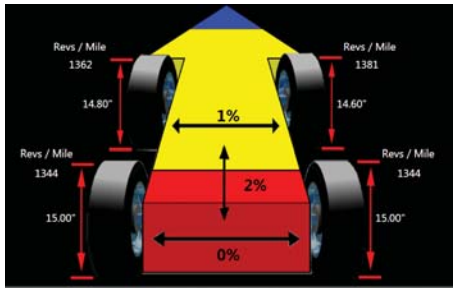
- Cross-diagonal* measurements identify frame or structural damage
- Rolling Radius* identifies mismatched tyre sizes – a potential cause of vehicle pulling and driver complaints

*Patented and / or patent-pending features



THE GEOLINER 670 XD WHEEL ALIGNMENT SYSTEM IS ONE OF THE MOST ADVANCED ON THE MARKET TODAY

Patented imaging technology provides accurate and real-time measurements that improve productivity. User-friendly features such as EZ-TOE*, VODI* and an extensive vehicle specification database deliver customer satisfaction, ease of use and accuracy.



AC400 CLAMPS WITH XD TARGETS

Weighing in at 3.13 kg (6.9 lbs) and measuring only 152 x 203 mm (6" x 8") in the front and rear, the AC400/XD package is the smallest and lightest we've ever made

RIDE HEIGHT* MEASUREMENT

Measure ride height and obtain proper alignment specs for those vehicles requiring it

EZ-TOE*

Turn the front wheels and access difficult adjustment points while still displaying centred toe readings

USER-FRIENDLY INTERFACE

Use available step-by-step instructions as a guide for completing even the most complex tasks

MANUFACTURER SPECS

Extensive OEM specs allow quick and accurate vehicle selection

VODI™

Vehicle Orientation Directional Indicator* – guides the technician through the measurement process

HELP VIDEOS

View detailed videos of how to make needed adjustments to complete even the most complex tasks

AVAILABLE WITH THE HOFMANN AC400 NON-CONTACT ALIGNMENT WHEEL CLAMPS



SECURE CLAMPING WITHOUT TOUCHING THE RIM

- Only the tyre is contacted
- Clutch limited clamping force ensures accurate and repeatable results
- Durable and lightweight magnesium construction



FAST AND EASY TO USE

- Clamping is accomplished with a single fast-action adjustment knob
- No accessories needed to accommodate the full range of tyre sizes
- Large, comfortable handle allows ergonomic use
- XD targets are lighter and take up less space than previous designs

*Patented and / or patent-pending features

PRODUCT FEATURES & SPECIFICATIONS

OPTIONAL ACCESSORIES

- AC100 universal wheel clamp kit: EAK0305J83A
- AC400 wheel clamp kit: EAK0320J35A
- Drive-on camera aid: EAK0289J91A
- Hub adaptor kit for wheels-off alignment: EAK0222J83B
- AC100 universal wheel clamp extension kit: EAK0268J62A
- Dual tall support kit: EAK0289J80A
- Centre tall support kit: 4031236
- Dual short support kit: EAK0289J81A
- Centre short support kit: 4031234
- Tilt camera beam: 4031154
- AC400 dual wheel adaptor kit: EAK0305J50A



SPECIFICATIONS

- Tyre diameter:
48.3 cm – 99.1 cm (19" – 39")
- Track width:
121.9 cm – 243.8 cm (48" – 96")
- Wheel Base:
200.7 cm – 457.2 cm (79" – 180")
- Printer: Included
- Shipping weights:
227 kg (501 lbs)
- Power requirements:
230 V 1 ph 50–60 Hz

AC400 SPECIFICATIONS

- Weight:
3.13 kg (6.9 lbs)
- Clamping force:
164.6 N (37 lbs)
- Construction:
Cast magnesium

STANDARD ACCESSORIES

- Wheel clamps & targets
- Steering wheel holder
- Brake pedal depressor
- Two wheel chocks

*Standard with EEWA545G

**Standard with EEWA545H

EMEA-JA

Snap-on Equipment s.r.l. · Via Prov. Carpi, 33 · 42015 Correggio (RE)
Phone: +39 0522 733-411 · Fax: +39 0522 733-479 · www.hofmann-europe.com

France

Snap-on Equipment France · ZA du Vert Galant · 15, rue de la Guivernone BP 97175
Saint-Ouen-l'Aumône · 95056 Cergy-Pontoise CEDEX
Phone: +33 134 48 58-78 · Fax: +33 134 48 58-70 · www.hofmann-france.fr

Germany

Snap-on Equipment GmbH · Konrad-Zuse-Straße 1 · 84579 Unterneukirchen
Phone: +49 8634 622-0 · Fax: +49 8634 5501 · www.hofmann-deutschland.com

Italy

Snap-on Equipment s.r.l. · Via Prov. Carpi, 33 · 42015 Correggio (RE)
Phone: +39 0522 733-411 · Fax: +39 0522 733-410
www.hofmann-italia.com

United Kingdom

Snap-on Equipment Ltd. · Unit 17 Denney Road, King's Lynn · Norfolk PE30 4HG
Phone: +44 118 929-6811 · Fax: +44 118 966-4369
www.snapon-equipment.co.uk

